

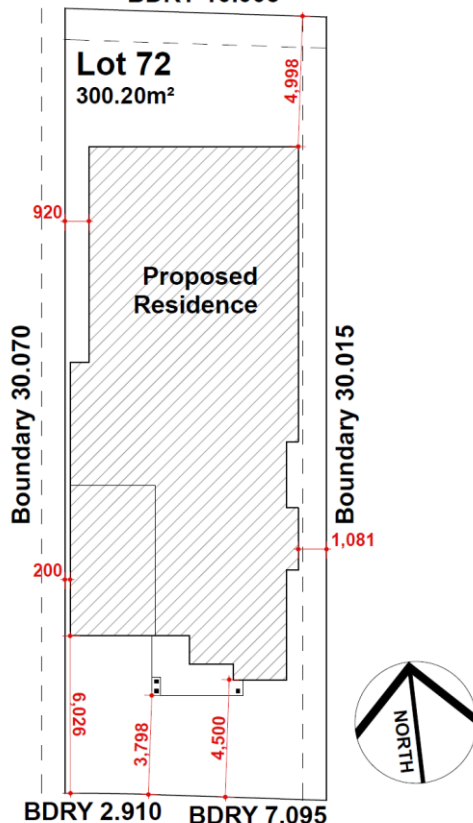
# HOUSE & LAND PACKAGE



BUILDING WITH EXCELLENCE  
SINCE 1994



BDRY 10.005



**PACKAGE PRICE**  
**\$1,058,700**

**Lot 72 (in No 122-138 Menin Rd & 58- 62 Boundary Rd) Oakville**

#### INCLUSIONS

- **Casaview Opulence Package - upgrades plus**
- Actron fully ducted air conditioning
- 2700mm ceilings to GFL.
- Ceramic floor tiles to living areas.
- 1200mm high wall tiling to ensuite x1 & main bath x 1.
- Carpet to remainder of house / double powers points throughout
- "Color On" concrete driveway (up to 30m2).
- Vertical blinds to all windows (exc. wet areas/garage)
- 5 sensor alarm package / Corinthian Panel carve internal doors.
- Flyscreens to all windows / Auto garage door opener.
- Heavy Duty sarking to roof / Granitgard Termite Protection.
- National Broadband Network (NBN) Setup works – basic
- Site fencing / internal external stairs as required.
- Standard BASIX requirements / Gas pack inc. connection.
- Site costs – incl all piling to slab, geo tech site classification testing, landscape plan, all dirt removal & the following if required only by local authorities - Drop edge beams, rock excavation, H1 slab upgrade / salinity treatment to slab / sewer peg out and or Bal12.5 Bushfire construction.
- Extensive Casaview Homes standard inclusions.

PROPOSED ROAD

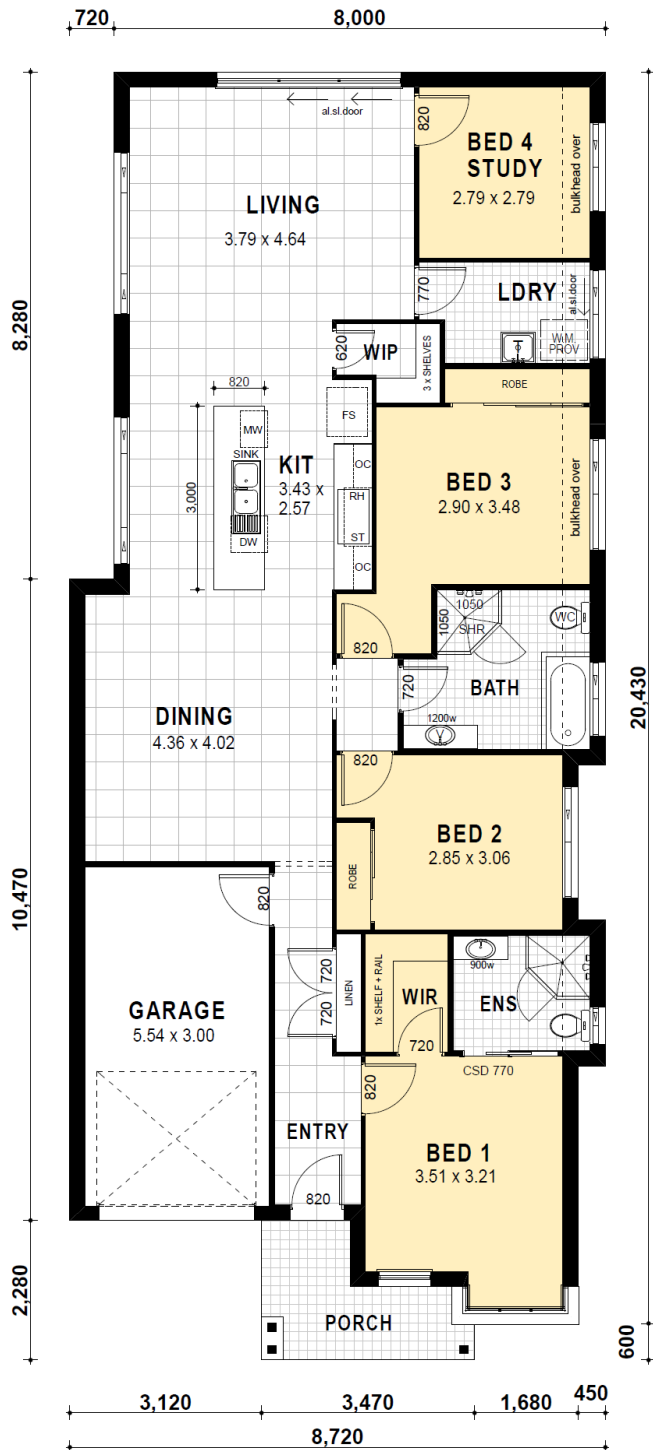
**Visit [www.casaview.com.au](http://www.casaview.com.au) or phone 8783 8800**

# HOUSE & LAND PACKAGE



Lot 72 – Lennox – modified (Avoca Façade) – 165.97m<sup>2</sup>

BUILDING WITH EXCELLENCE  
SINCE 1994



DATA	
1. ground	141.71
2. garage	18.75
3. porch	5.51
	165.97 m <sup>2</sup>

Contact Jim 9627 4057 or 0438 162 497 for more information