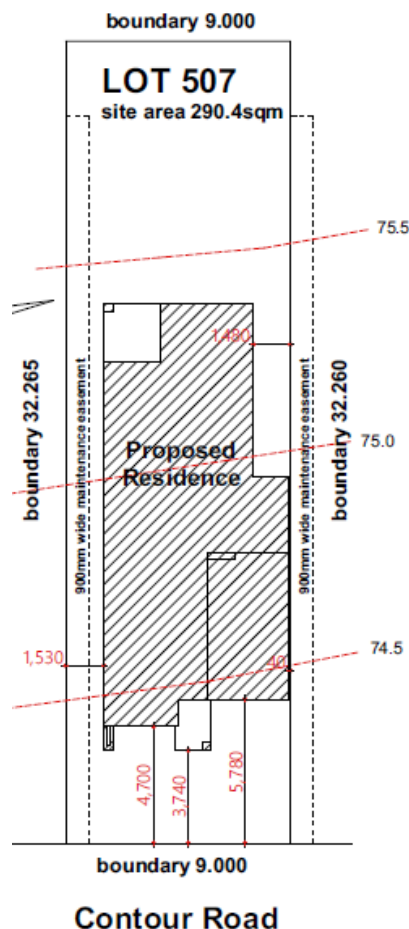


HOUSE & LAND PACKAGE



BUILDING WITH EXCELLENCE
SINCE 1994



PACKAGE PRICE

\$729,000

Lot 507 Contour Rd Austral (300 Sixth Ave)

INCLUSIONS

- **Casaview Opulence Package - upgrades plus**
- Actron fully ducted air conditioning
- 2700mm ceilings to GFL.
- Ceramic floor tiles to living areas.
- 1200mm high wall tiling to ensuite x1 & main bath x 1.
- Carpet to remainder of house / double powers points throughout
- Stencil concrete driveway (up to 30m2).
- Vertical blinds to all windows (exc. wet areas/garage)
- 5 sensor alarm package / Corinthian Panel carve internal doors.
- Flyscreens to all windows / Auto garage door opener.
- Heavy Duty sarking to roof / Granitgard Termite Protection.
- National Broadband Network (NBN) Setup works – basic
- Site fencing / internal external stairs as required.
- Standard BASIX requirements / Gas pack inc. connection.
- Site costs – incl all piling to slab, site classification testing, landscape plan, all dirt removal & the following if required only by local authorities - Drop edge beams, rock excavation, H1 slab upgrade / salinity treatment to slab / sewer peg out and or Bal12.5 Bushfire construction.
- Extensive Casaview Homes standard inclusions.

Visit www.casaview.com.au or phone 8783 8800

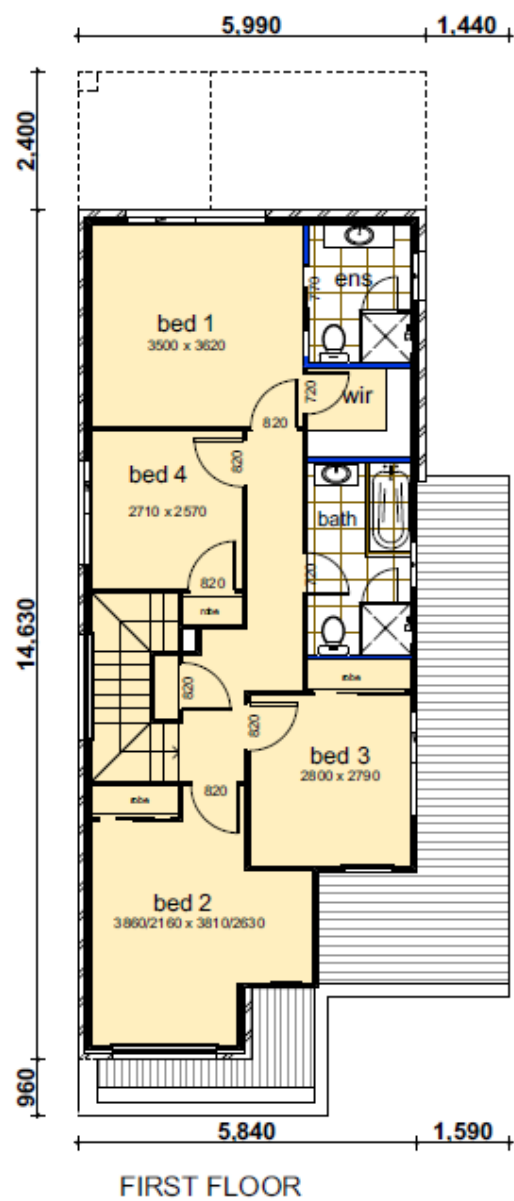
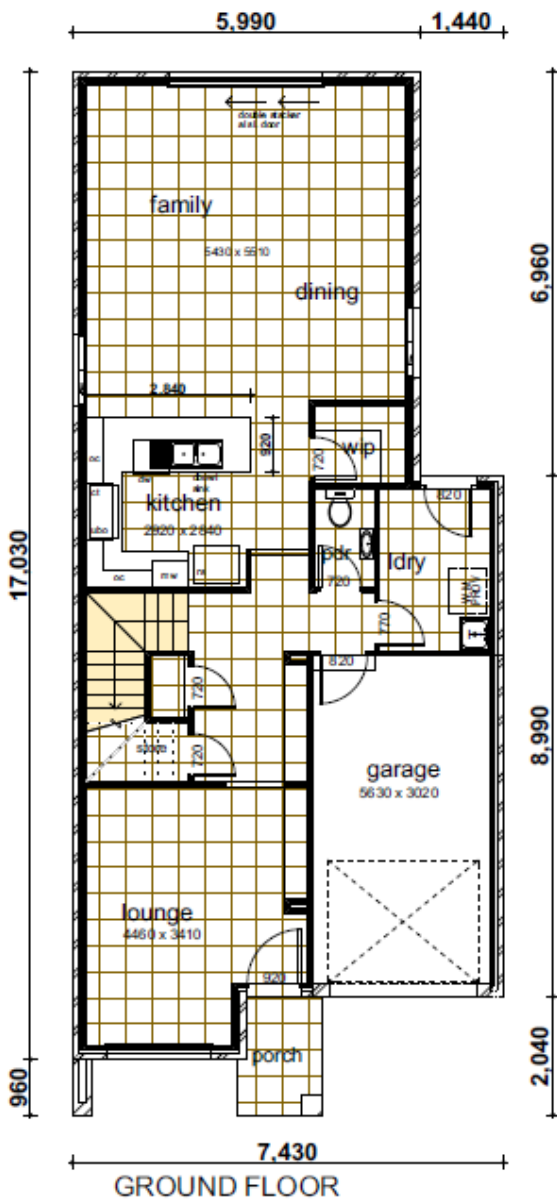
HOUSE & LAND PACKAGE



Lot 507 – Pacific 21 - Modified – 196.50

BUILDING WITH EXCELLENCE
SINCE 1994

DATA	
1. ground floor	92.40
2. garage	19.31
3. porch	2.84
4. first floor	79.22
5. covered area	2.73
	196.50 m ²



Contact Pandit 9826 5040 & Baan 9606 2052 for more information