

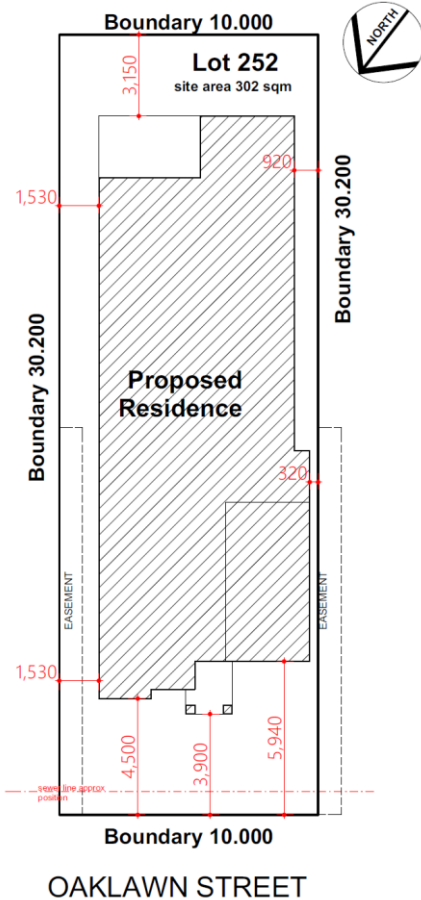
HOUSE & LAND PACKAGE



BUILDING WITH EXCELLENCE
SINCE 1994



PACKAGE PRICE
\$967,000



Lot 252 Oaklawn St Box Hill - Futurity Rise Estate

INCLUSIONS

- **Casaview Opulence Package - upgrades plus**
- Actron fully ducted air conditioning
- 2700mm ceilings to GFL.
- Ceramic floor tiles to living areas.
- 1200mm high wall tiling to ensuite x1 & main bath x 1.
- Carpet to remainder of house / double powers points throughout
- "Color On" concrete driveway (up to 30m2).
- Vertical blinds to all windows (exc. wet areas/garage)
- 5 sensor alarm package / Corinthian Panel carve internal doors.
- Flyscreens to all windows / Auto garage door opener.
- Heavy Duty sarking to roof / Granitgard Termite Protection.
- National Broadband Network (NBN) Setup works – basic
- Site fencing / internal external stairs as required.
- Standard BASIX requirements / Gas pack inc. connection.
- Site costs – incl all piercing to slab, geo tech site classification testing, landscape plan, all dirt removal & the following if required **only** by local authorities - Drop edge beams, rock excavation, H1 slab upgrade / salinity treatment to slab / sewer peg out and or Bal12.5 Bushfire construction.
- Extensive Casaview Homes **standard** inclusions.

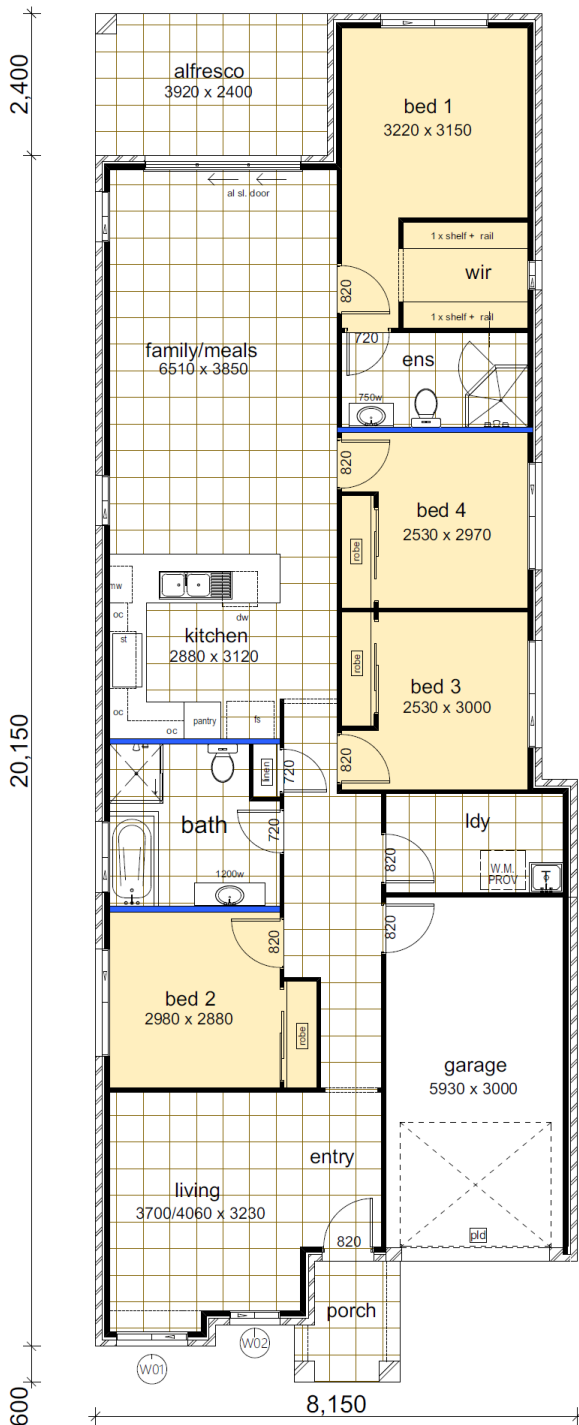
Visit www.casaview.com.au or phone 8783 8800

HOUSE & LAND PACKAGE



Lot 252 – Lithgow Design - modified – Wattle Façade – 175.55m²

BUILDING WITH EXCELLENCE
SINCE 1994



Floor Areas	
1. living areas	139.64
2. garage	19.96
3. porch	6.54
4. alfresco	9.41
	175.55 m ²

Contact Jim Svalina 9627 4057 for more information