



Display Home  
**FOR SALE**

**36 Donald St,  
Marsden Park**

**\$1,429,000**



## The Eden

This four-bedroom display home offers contemporary living and quality finishes throughout, ideal for a new home buyer. The home is situated in Marsden Park's HomeWorld approximately 1KM from Marsden Park Shopping village and St Lukes Catholic College.

The home includes:

- 2.7 High Ceiling's
- Upgraded with Total Opulence Collection
- Fully Ducted Actron Air Conditioning
- Downlights throughout
- Feature Wallpaper
- Stone rendered Finishes to Front Facade
- Ceramic floor tiles to common areas.
- Carpet to remainder of house.
- Ceiling high wall tiling to ensuite & main bathroom.
- 5 sensor alarm package.
- Security Cameras
- Plantation Shutters to all windows (exc. wet area & garage).
- Flyscreens to all windows.
- Completely Furnished
- Landscaping
- Colorbond Fencing
- And much much more..



**420m2 Block**



**4 Bed**



**2 Bath**



**2 Garage**



3D Tour

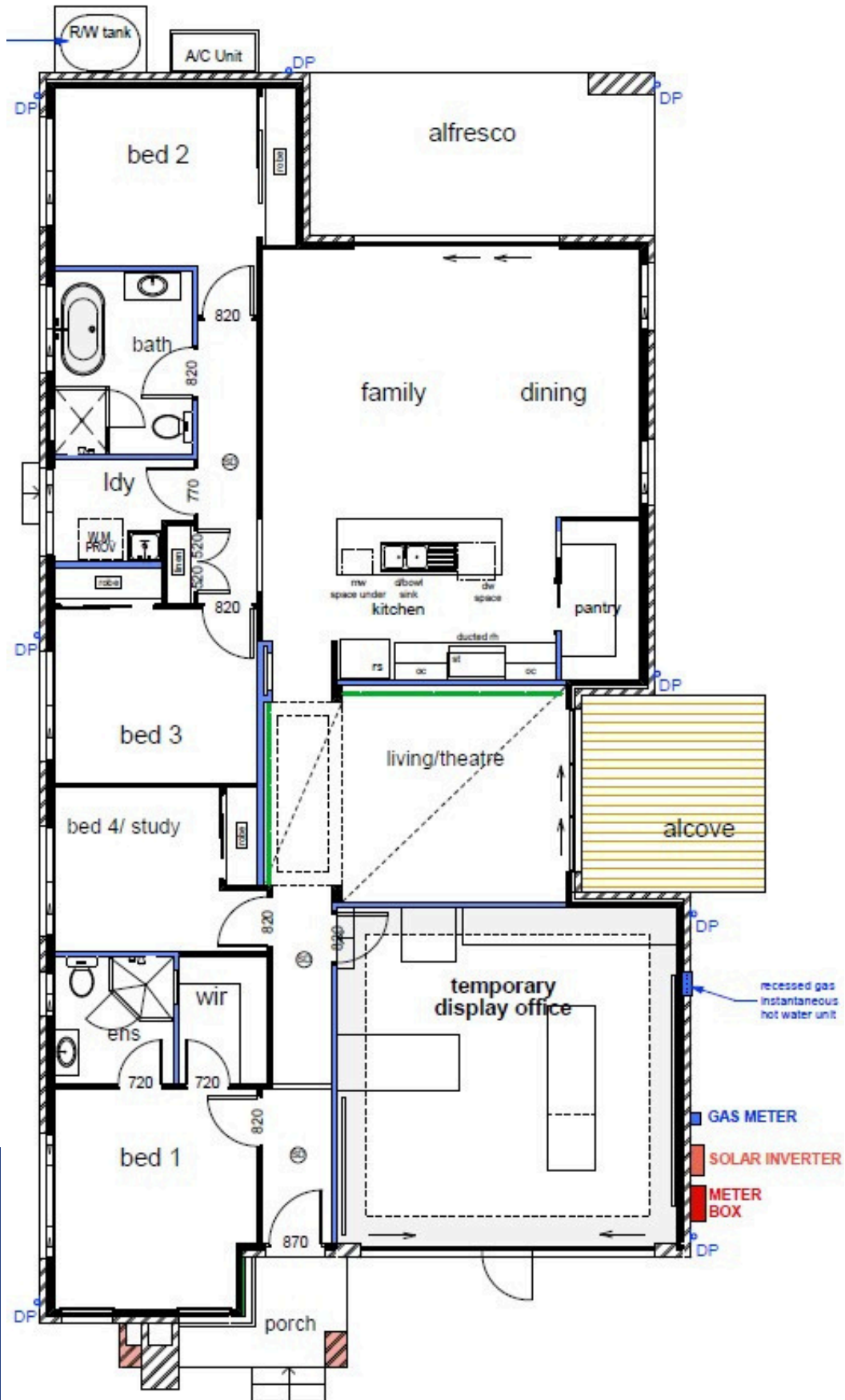


02 8783 8800



myhome@casaview.com.au

FLOOR AREAS	
1. living areas	150.41
2. garage	33.76
3. alfresco	14.95
4. porch	3.61
	<b>202.73 m<sup>2</sup></b>



420m<sup>2</sup> Block
4 Bed
2 Bath
2 Garage



3D Tour



02 8783 8800



myhome@casaview.com.au