

House & Land Package



Lot 233

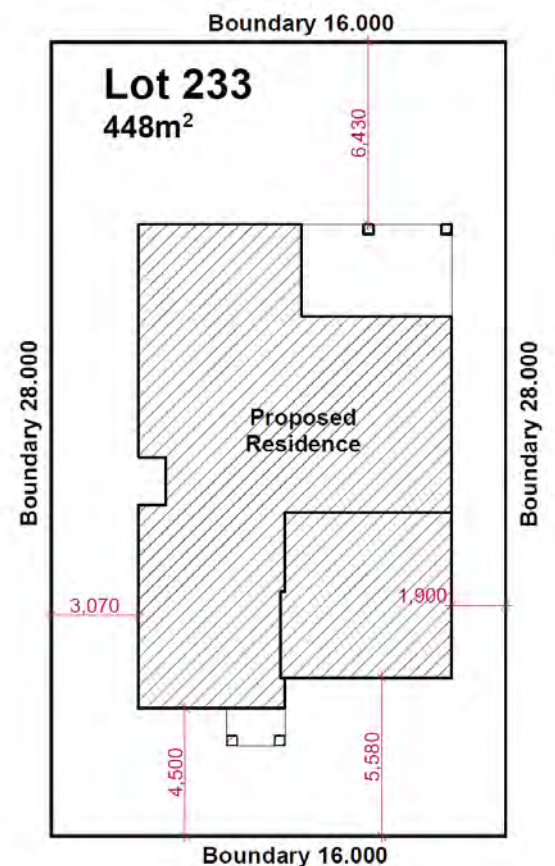
Proposed Rd (in No 20 Ridge Square, Leppington)

Package Price

\$1,417,000

Inclusions

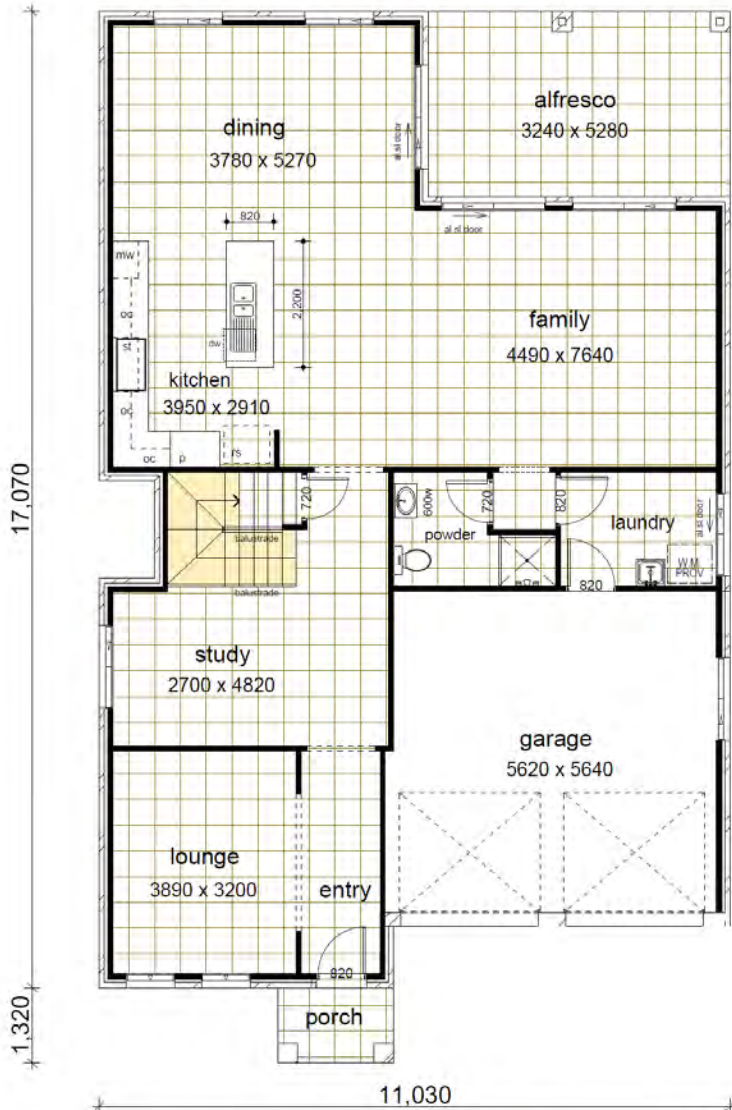
- Casaview Opulence Package - upgrades plus
- Actron fully ducted air conditioning
- 2700mm ceilings to GFL.
- Ceramic floor tiles to living areas.
- 1200mm high wall tiling to ensuite x1 & main bath x 1.
- Carpet to remainder of house / double powers points throughout
- "Color On" concrete driveway (up to 50m²).
- Vertical blinds to all windows (exc. wet areas/garage)
- 5 sensor alarm package / Corinthian Panel carve internal doors.
- Flyscreens to all windows / Auto garage door opener.
- Heavy Duty sarking to roof / Granitgard Termite Protection.
- National Broadband Network (NBN) Setup works – basic
- Site fencing / internal external stairs as required.
- Standard BASIX requirements / Gas pack inc. connection.
- Site costs – incl all piling to slab, geo tech site classification testing, landscape plan, all dirt removal & the following if required only by local authorities - Drop edge beams, rock excavation, H1 slab upgrade / salinity treatment to slab / sewer peg out and or Bal12.5 Bushfire construction.
- Extensive Casaview Homes standard inclusions.



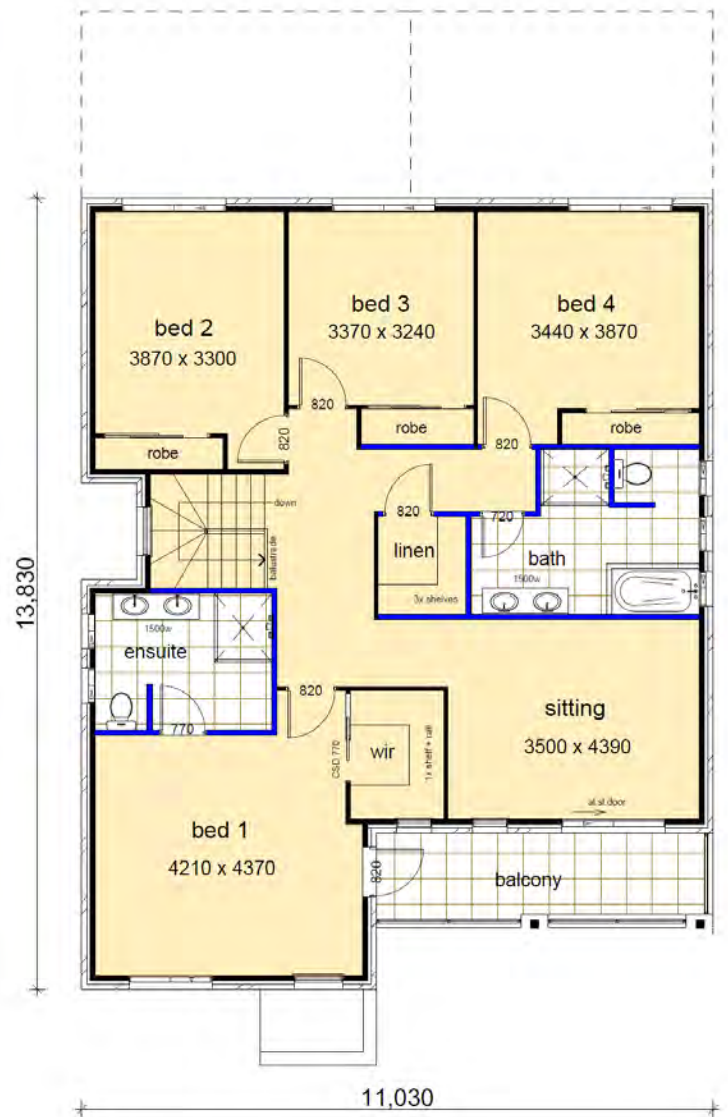
Lot 233

4  3  2 

Land Size	448m ²		
Ground Floor	128.34m ²	Patio	2.68m ²
First Floor	134.86m ²	Balcony	9.70m ²
Garage	34.86m ²	Alfresco	17.11m ²
Total	327.55m ²		



GROUND FLOOR PLAN



FIRST FLOOR PLAN



Contact Baan 0412 199 488 or Pandit 0429 138 801 | www.casaview.com.au