

# HOUSE & LAND PACKAGE

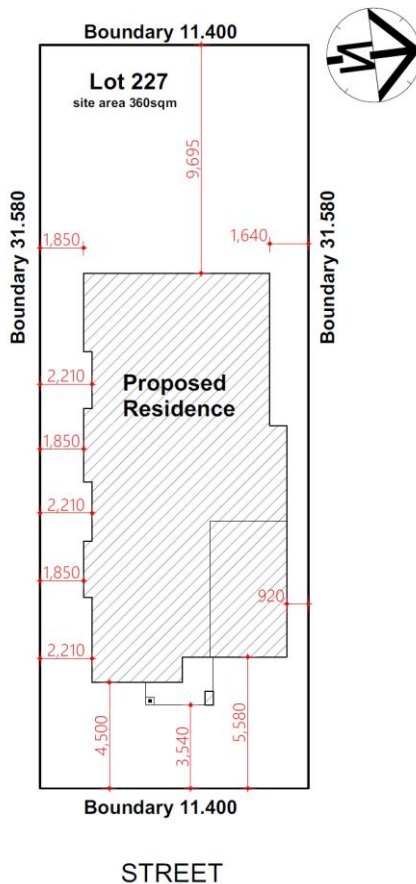


BUILDING WITH EXCELLENCE  
SINCE 1994



**PACKAGE PRICE**  
**\$848,000**

**Lot 227 Lipizzan Rd (No 15-25 Seventh Ave) Austral**



#### INCLUSIONS

- **Casaview Opulence Package - upgrades plus**
- Actron fully ducted air conditioning
- 2700mm ceilings to GFL.
- Ceramic floor tiles to living areas.
- 1200mm high wall tiling to ensuite x1 & main bath x 1.
- Carpet to remainder of house / double powers points throughout
- Stencil concrete driveway (up to 30m2).
- Vertical blinds to all windows (exc. wet areas/garage)
- 5 sensor alarm package / Gas pack inc. connection.
- Flyscreens to all windows / Auto garage door opener.
- Heavy Duty sarking to roof / Granitgard Termite Protection.
- National Broadband Network (NBN) Setup works – basic
- Site fencing / internal external stairs as required.
- Standard BASIX requirements incl rainwater tank 3500lt
- Site costs – incl all piling to slab, site classification testing, landscape plan, all dirt removal & the following if required only by local authorities - Drop edge beams, rock excavation, H1 slab upgrade / salinity treatment to slab / sewer peg out and or Bal12.5 Bushfire construction.
- Extensive Casaview Homes standard inclusions.

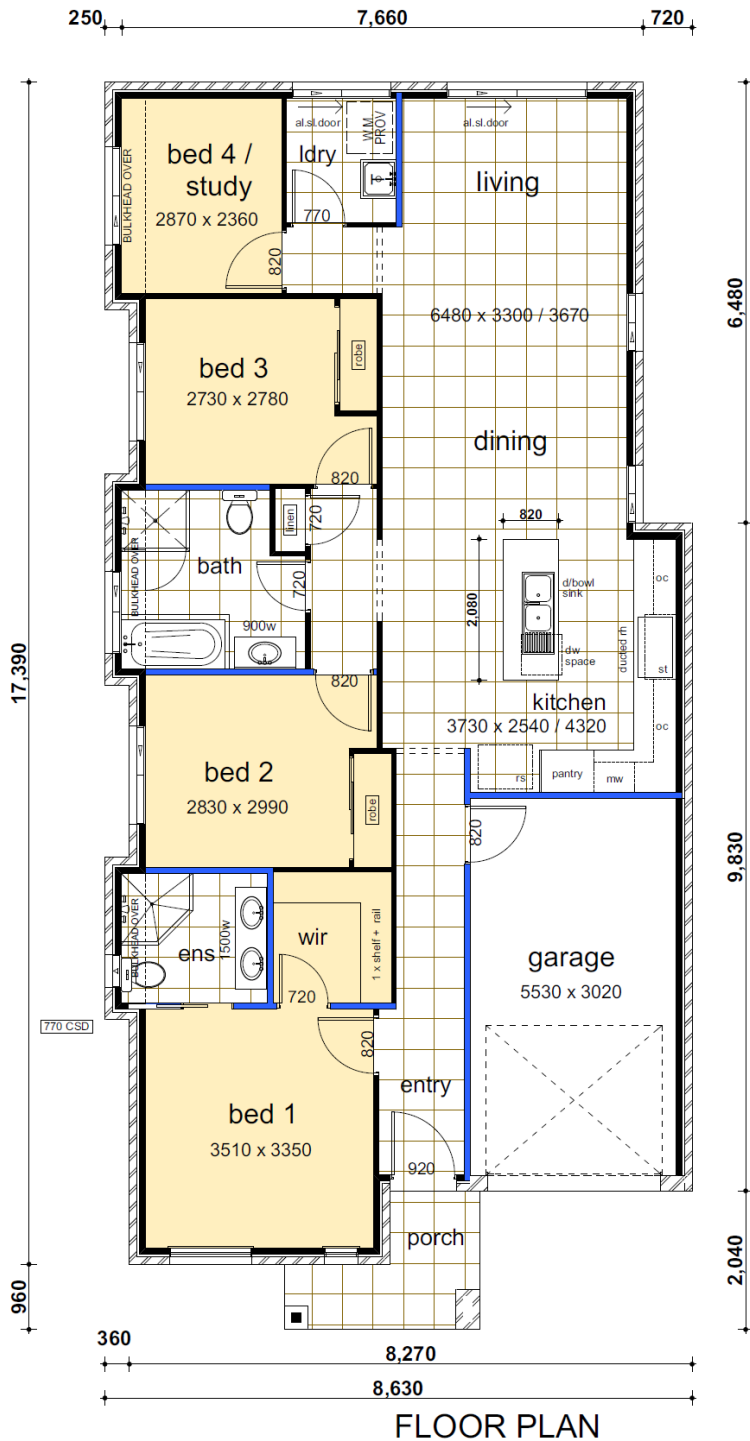
**Visit [www.casaview.com.au](http://www.casaview.com.au) or phone 8783 8800**

# HOUSE & LAND PACKAGE



Lot 227 – Stamford– Gregory Façade - Modified – 141.72m<sup>2</sup>

BUILDING WITH EXCELLENCE  
SINCE 1994



DATA	
1. living areas	118.73
2. garage	18.81
3. porch	4.18
	141.72 m <sup>2</sup>

Contact Pandit 9826 5040 or Baan 9606 2025 for more information