

House & Land Package



CASAVIEW
HOMES

Extensive Quality Inclusions



Lot 20

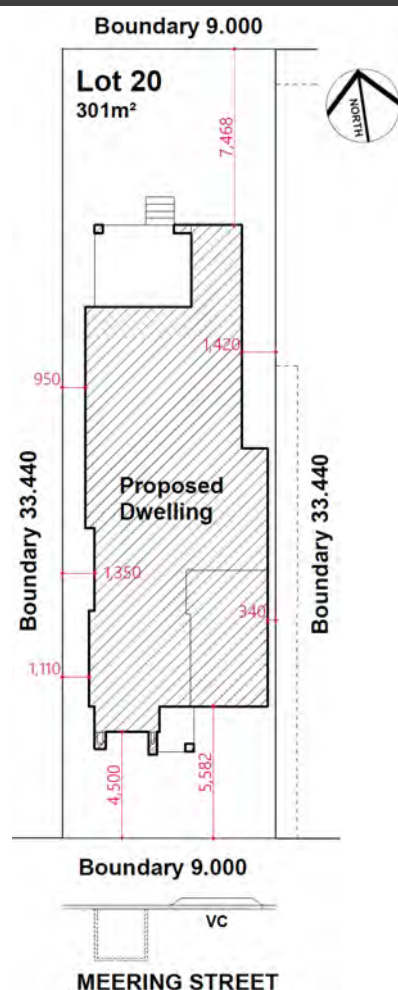
Meering St Austral
(65-75 Sixteenth Ave)

Package Price

\$1,089,900

Inclusions

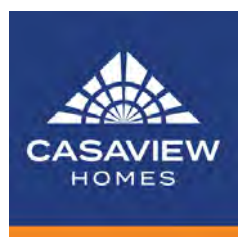
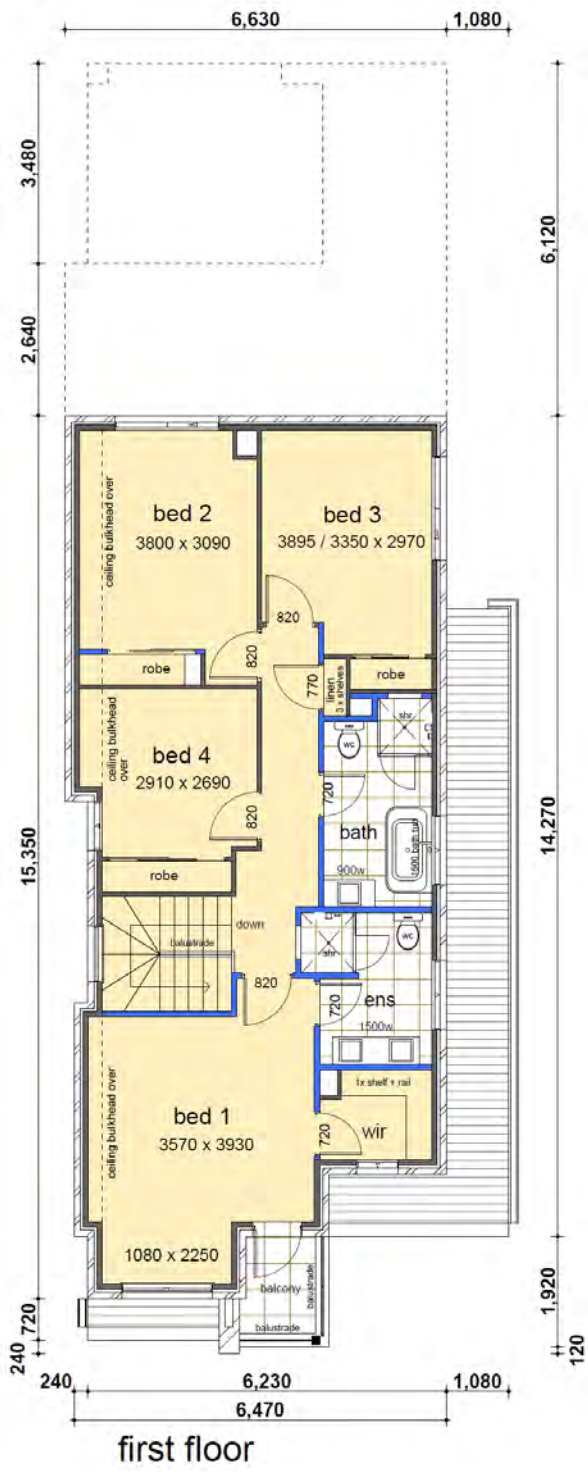
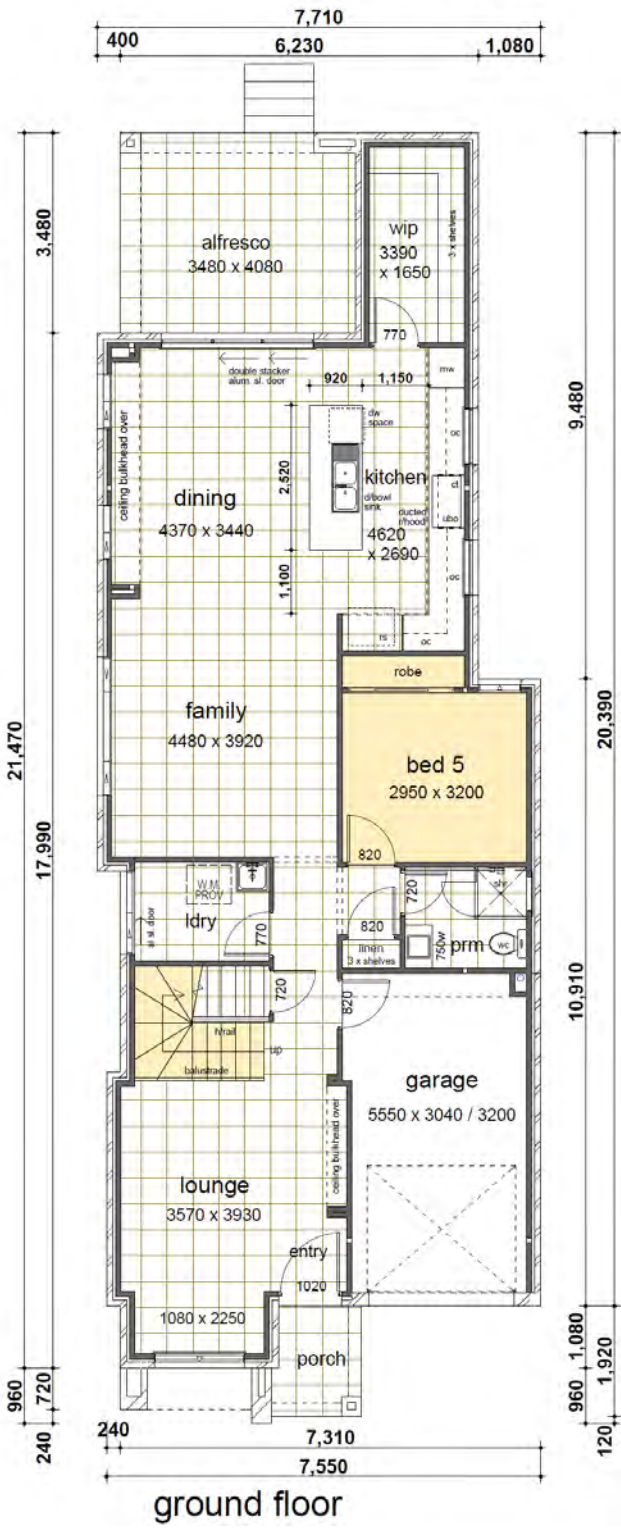
- Casaview Opulence Package - upgrades plus
- Actron fully ducted air conditioning
- 2700mm ceilings to GFL.
- Ceramic floor tiles to living areas.
- 1200mm high wall tiling to ensuite x1 & main bath x 1.
- Carpet to remainder of house / double powers points throughout
- "Color On" concrete driveway (up to 30m2).
- Vertical blinds to all windows (exc. wet areas/garage)
- 5 sensor alarm package / Corinthian Panel carve internal doors.
- Flyscreens to all windows / Auto garage door opener.
- Heavy Duty sarking to roof.
- National Broadband Network (NBN) Setup works – basic
- Site fencing / internal external stairs as required.
- Standard BASIX requirements / Gas pack inc. connection.
- Site costs – incl all piling to slab, geo tech site classification testing, landscape plan, all dirt removal & the following if required only by local authorities - Drop edge beams, rock excavation, H1 slab upgrade / salinity treatment to slab /sewer peg out and or Bal12.5 Bushfire construction.
- Extensive Casaview Homes standard inclusions.
- Incls upgrading dwelling to 7-Star minimum requirements -subject to formal ABSA certification



Lot 20

4  3  1 

Land Size	301.00m ²		
Ground Floor	113.36	Balcony	2.87
Garage	19.27		
Porch	2.87		
First Floor	93.67		
Covered Area	1.64		
Alfresco	14.20		
Total	247.88m²		



Contact Pandit 0429 138 801 or Jim 0438 162 497 | www.casaview.com.au