

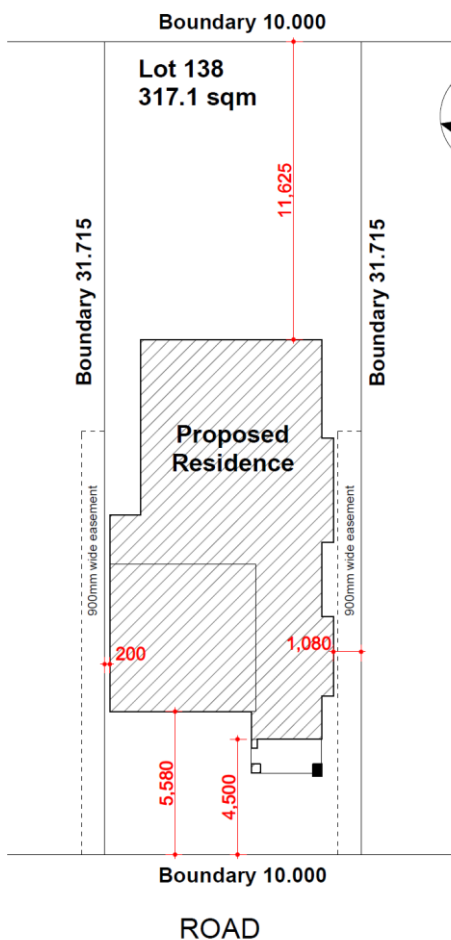
HOUSE & LAND PACKAGE



BUILDING WITH EXCELLENCE
SINCE 1994



PACKAGE PRICE
\$999,500



Lot 138 (in No 65-75 Fourteenth & 310-320 Fifteenth Ave) Austral

INCLUSIONS

- **Casaview Opulence Package - upgrades plus**
- Actron fully ducted air conditioning
- 2700mm ceilings to GFL.
- Ceramic floor tiles to living areas.
- 1200mm high wall tiling to ensuite x1 & main bath x 1.
- Carpet to remainder of house / double powers points throughout
- "Color On" concrete driveway (up to 50m2).
- Vertical blinds to all windows (exc. wet areas/garage)
- 5 sensor alarm package / Corinthian Panel carve internal doors.
- Flyscreens to all windows / Auto garage door opener.
- Heavy Duty sarking to roof / Granitgard Termite Protection.
- National Broadband Network (NBN) Setup works – basic
- Site fencing / internal external stairs as required.
- Standard BASIX requirements / Gas pack inc. connection.
- Site costs – incl all piling to slab, geo tech site classification testing, landscape plan, all dirt removal & the following if required only by local authorities - Drop edge beams, rock excavation, H1 slab upgrade / salinity treatment to slab / sewer peg out and or Bal12.5 Bushfire construction.
- Extensive Casaview Homes standard inclusions.

Visit www.casaview.com.au or phone 8783 8800

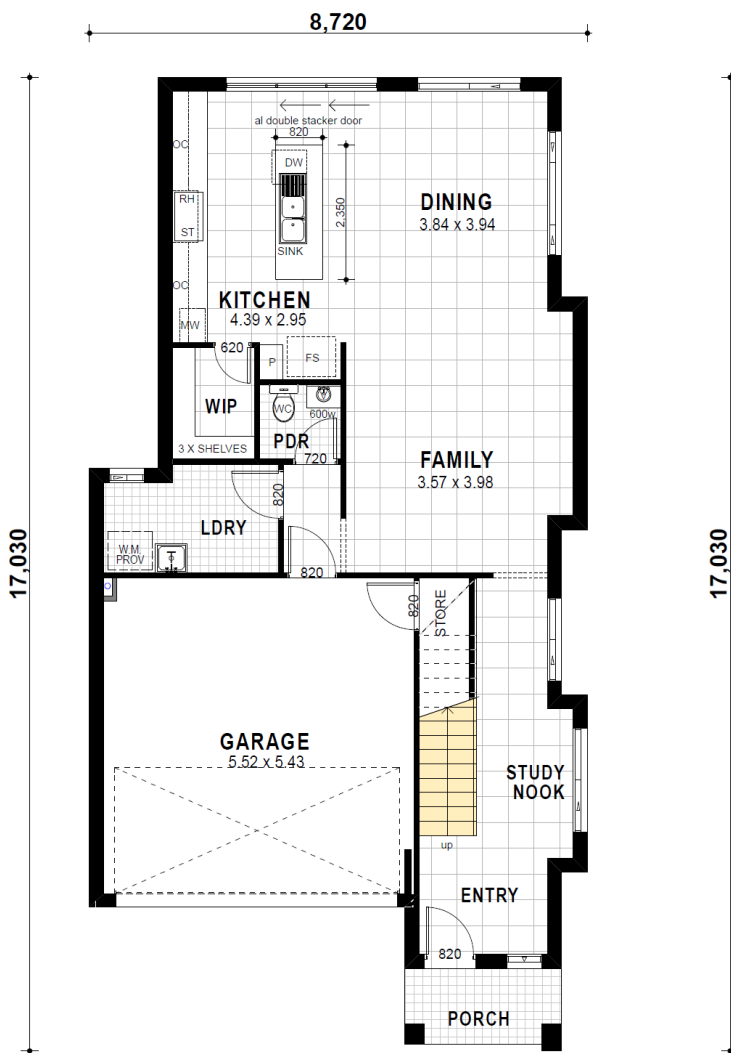
HOUSE & LAND PACKAGE



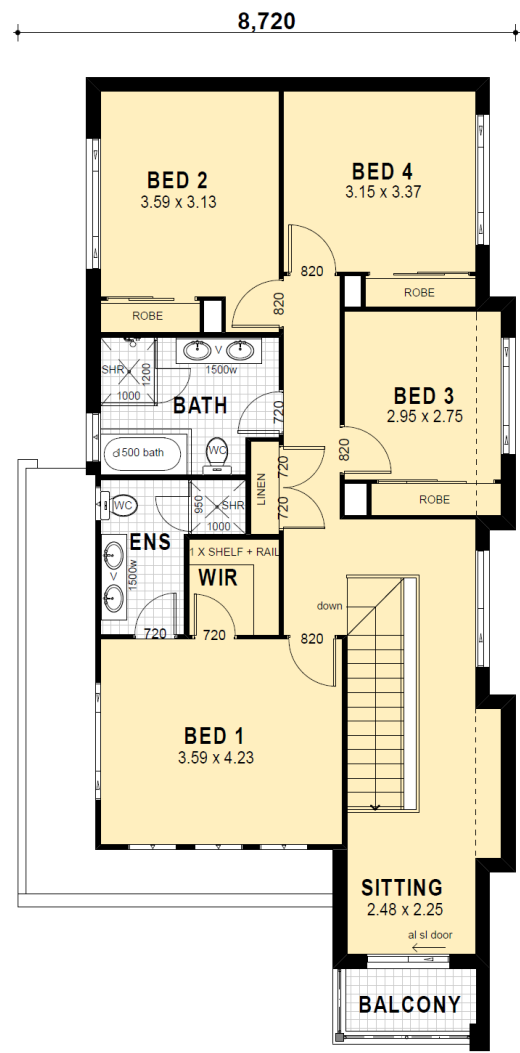
Lot 138 Primavera – modified (Beta Façade) – 228.75m²

**BUILDING WITH EXCELLENCE
SINCE 1994**

FLOOR AREAS	
1. GROUND FLOOR	85.33
2. GARAGE	32.66
4. PORCH	3.67
5. FIRST FLOOR	103.42
6. BALCONY	3.67
	228.75 m²



GROUND FLOOR



FIRST FLOOR

Contact Pandit 9826 5040 or Baan 9606 2025 for more information