

House & Land Package

Extensive Quality Inclusions



Lot 13

Waterson Circuit Tahmoor
in 71 Greenacre Drv Tahmoor sub division

Package Price

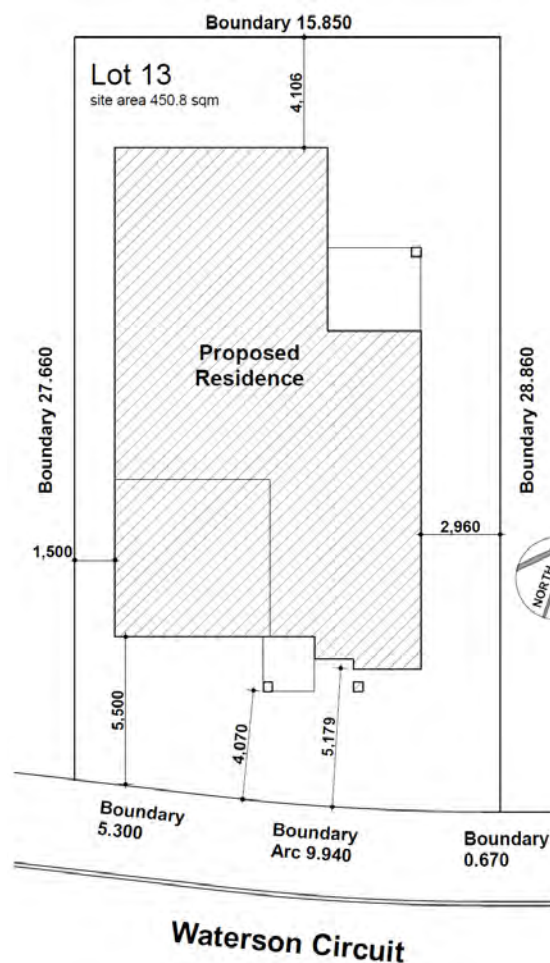
\$924,900

Inclusions

• Casaview 2025 Plus Package inclusions

+ Actron fully ducted air conditioning + 2700mm ceilings + 6.6Kw Solar + 4 x ceiling fans + 1 x roof ventilator + soft close to joinery + 20 LED downlights ++ **34 more upgrades in CASA Collection.**

- Ceramic floor tiles to living areas.
- 1200mm high wall tiling to ensuite x1 & main bath x 1.
- Carpet to remainder of house / double power points throughout
- "Color On" concrete driveway (up to 50m²).
- Vertical blinds to all windows (exc. wet areas/garage)
- 5 sensor alarm package / Hume Panel carve internal doors.
- Flyscreens to all windows / Auto garage door opener.
- Heavy Duty sarking to roof.
- National Broadband Network (NBN) Setup works – basic
- Site fencing / internal external stairs as required.
- Standard BASIX requirements / Gas pack inc. connection.
- Site costs – incl all piling to slab, geo tech site classification testing, landscape plan, all dirt removal & the following if required only by local authorities - Drop edge beams, rock excavation, H1 slab upgrade / salinity treatment to slab /sewer peg out and or Bal12.5 Bushfire construction.
- Extensive Casaview Homes standard inclusions.
- Incls upgrading dwelling to 7-Star minimum requirements -subject to formal ABSA certification

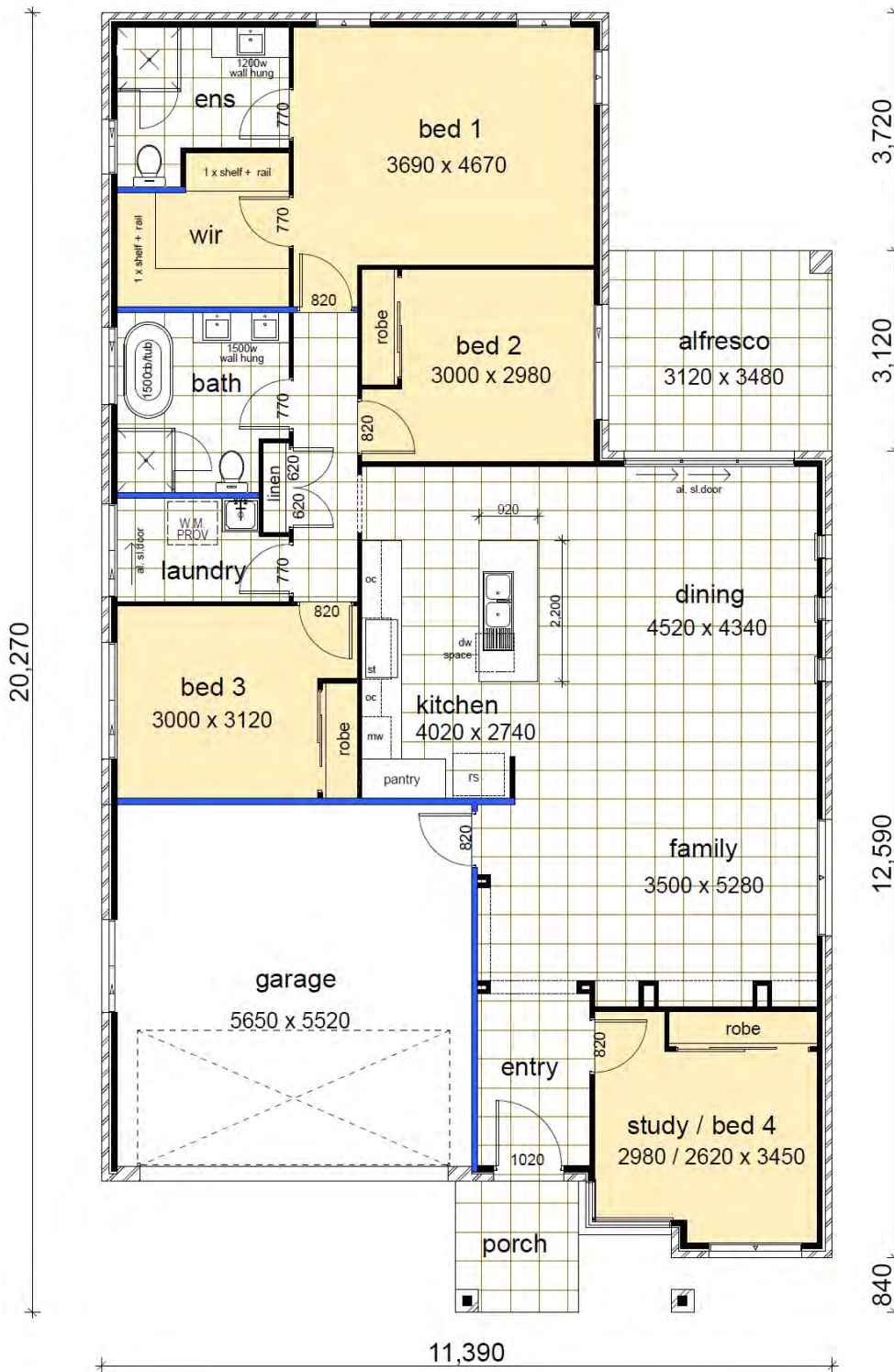


Lot 13

4  2  2 

Land Size	450.80m ²
Ground Floor	154.13
Garage	33.93
Porch	3.92
Alfresco	10.86
Covered Area	2.02

Total 204.86m²



Contact Pandit 0429 138 801 or Jim 0438 162 497 | www.casaview.com.au

