



**NEW HOME FOR  
SALE WITH  
INTEGRATED  
GRANNY FLAT**

**\$1,499,000**



**Lot 13, No 34 Brush Cherry St, Leppington**

Attention astute investors or extended families, Casaview homes have recently completed this beautiful home with integrated granny flat. The home is ideal for someone looking to secure a dual income or simply satisfy the need for multiple families. This contemporary home will impress with its modern design and quality finishes. The layout offers open plan living with elevated ceiling, step down feature to entertaining area and sitting room upstairs.

The two-tone kitchen is the centre piece of this home offering stone tops and modern tiled splash back and finished with quality ILVE appliances.

Upstairs provides four spacious bedrooms with plush carpet and sitting area and a beautifully finished main bathroom. The Master bedroom includes a tile to ceiling ensuite and walk-in Robe. This home provides high-end finishes and a list of endless inclusions.

The main home is finished with its own alfresco area ideal for entertaining.

The additional one-bedroom self contained unit offers separate living with a main bathroom and kitchenet, finished in high spec to match main home.

The grounds are fully landscaped and fenced, positioned close to Leppington Schools, shops and train station.



**300 m2 Block**



**5 Bed**



**3 Bath**



**2 Garage**



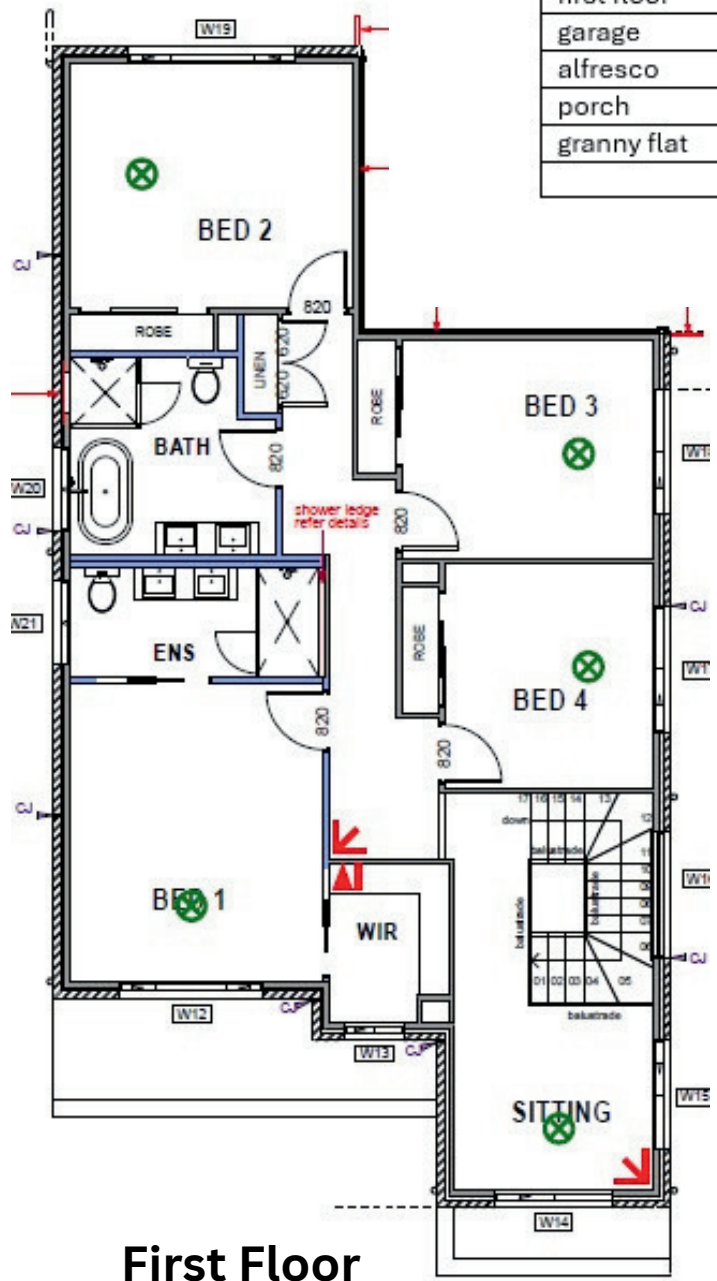
**02 8783 8800**



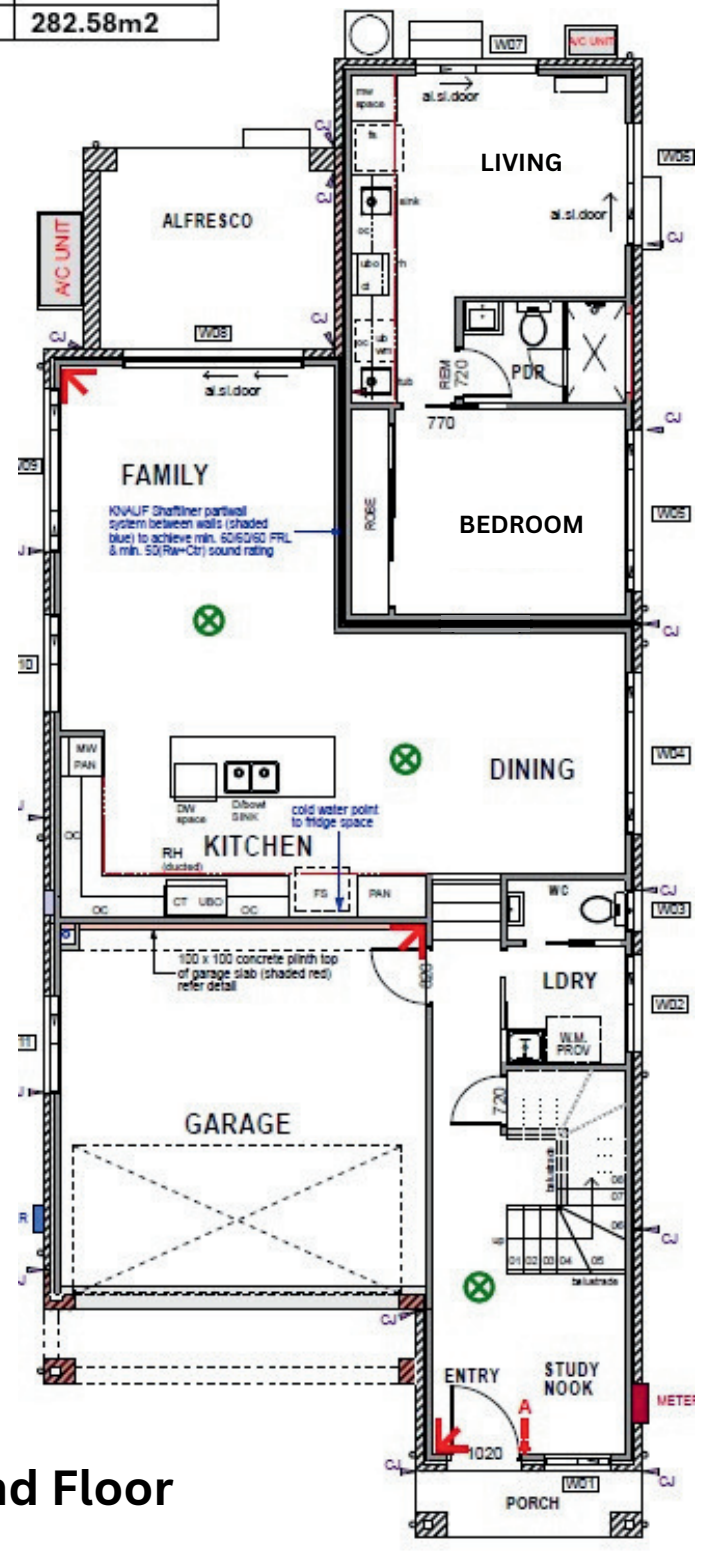
**myhome@casaview.com.au**

ground floor	83.88
first floor	113.93
garage	32.66
alfresco	11.16
porch	3.22
granny flat	37.73
	<b>282.58m<sup>2</sup></b>

# Granny Flat



**First Floor**



**Ground Floor**



300 m<sup>2</sup> Block
 5 Bed
 3 Bath
 2 Garage

02 8783 8800

[myhome@casaview.com.au](mailto:myhome@casaview.com.au)