

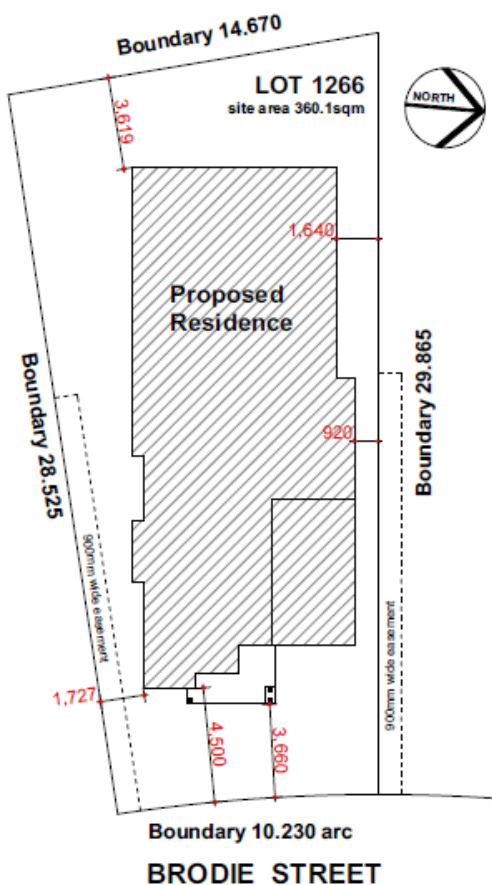
HOUSE & LAND PACKAGE



BUILDING WITH EXCELLENCE
SINCE 1994



PACKAGE PRICE
\$739,500



Lot 1266 Brodie St Marsdens Park (Clydesdale Estate)

INCLUSIONS

- Casaview Opulence Upgrade Package
- Ceramic floor tiles to living areas.
- 1200mm high wall tiling to ensuite x1 & main bath x 1.
- Carpet to remainder of house.
- "Color on" concrete driveway (up to 30m2).
- Vertical blinds to all windows (exc. wet areas/garage).
- 5 sensor alarm package.
- Flyscreens to all windows.
- Sarking to roof.
- Site fencing & internal / ext steps.
- National Broadband Network (NBN) Setup works – basic
- Standard BASIX requirements incl rainwater tank 3500lt
- Gas pack inc. connection.
- Site costs – incl all piling to slab, site classification testing, landscape plan, all dirt removal & the following if required only by local authorities - Drop edge beams, rock excavation, H1 slab upgrade / salinity treatment to slab / sewer peg out and or Bal12.5 Bushfire construction.

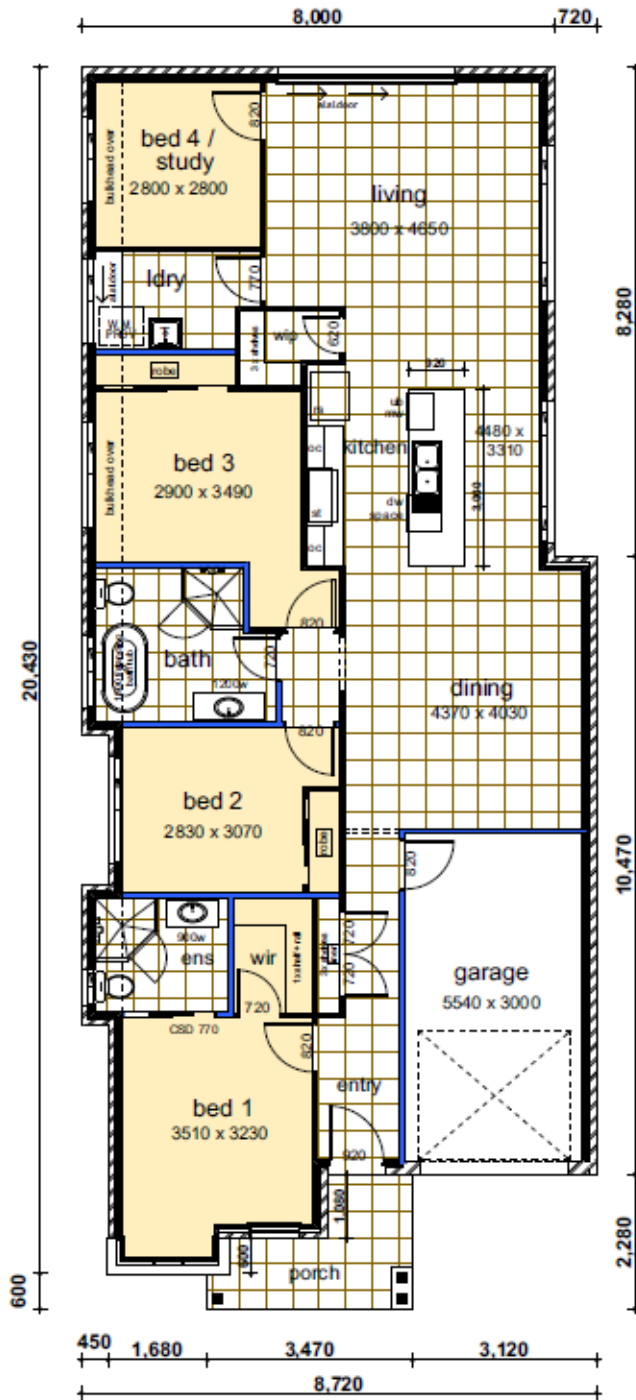
Visit www.casaview.com.au or phone 8783 8800

HOUSE & LAND PACKAGE



Lot 1266 – Lennox - Modified – 165.97m²

**BUILDING WITH EXCELLENCE
SINCE 1994**



DATA	
1. ground	141.77
2. garage	18.69
3. porch	5.51
	165.97 m ²

floor plan

Contact Jim Svalina 9627 4057 for more information