

# THE STUART

Building With Excellence Since 1994



CASAVIEW HOMES - 100% AUSTRALIAN OWNED & OPERATED



# STUART 19 Mk1

## PACKAGE INCLUDES:

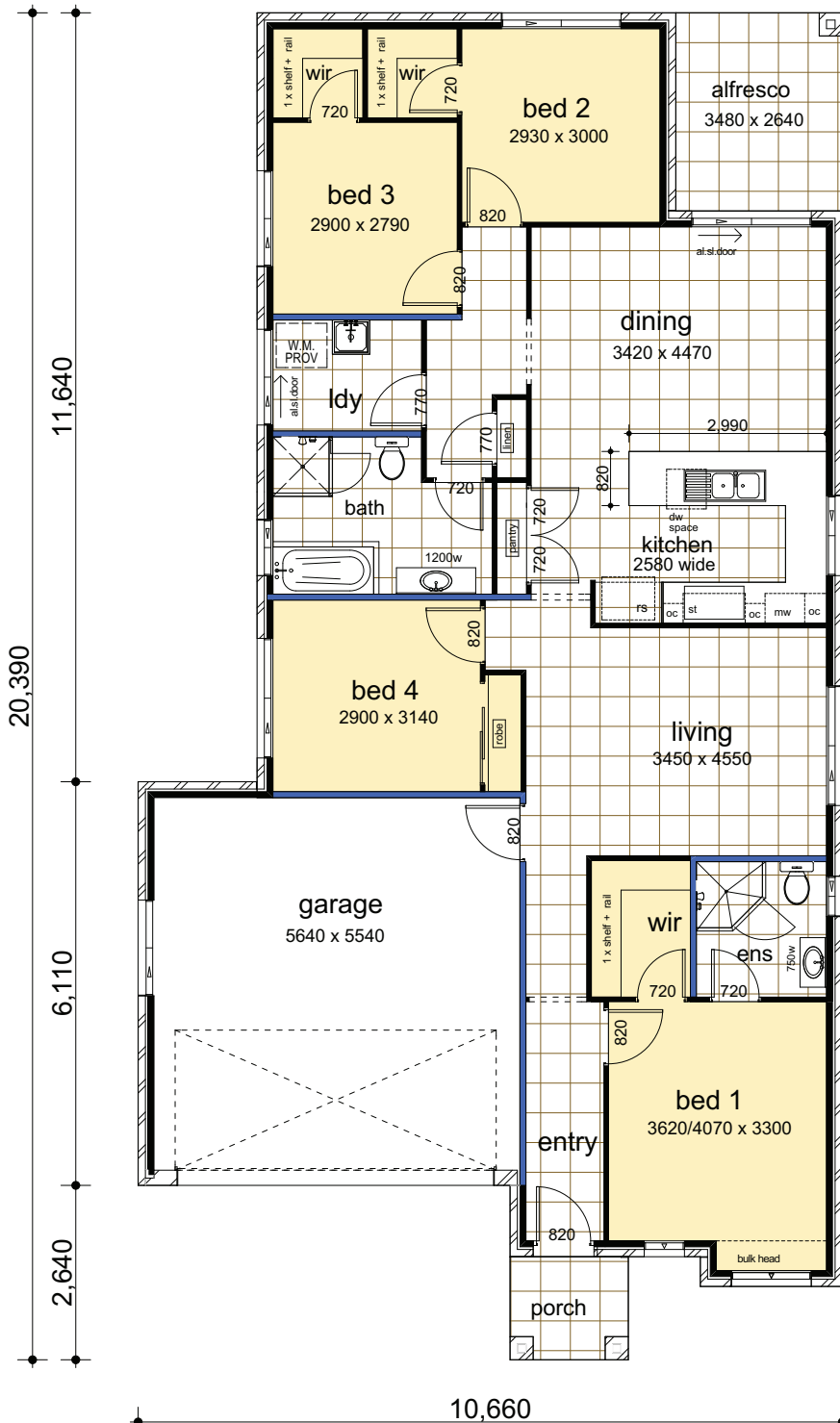
- "Colour on" concrete driveway (up to 50 Sqm)
- Ceramic floor tiles to common areas
- Carpet to remainder of house
- 1200mm high wall ceramic tiling to bed 1 ensuite & main bathroom x 1
- 5 sensor alarm package
- Vertical blinds to all windows (exc. wet area & garage)
- Flyscreens to all windows
- Standard Basix costs
- Facade in face brick as designed
- Construction site fencing
- 32MPA salinity resistant house slab

### DATA

1. Living Area	132.74
2. Garage	34.36
3. Porch	2.79
4. Alfresco	7.56
	<b>177.45m<sup>2</sup></b>

Suits 12.5m wide block.

Floor Plan drawn with Bradman Facade



Plans Copyright of Casaview Homes

WWW.CASAVIEW.COM.AU

# STUART 20

## PACKAGE INCLUDES:

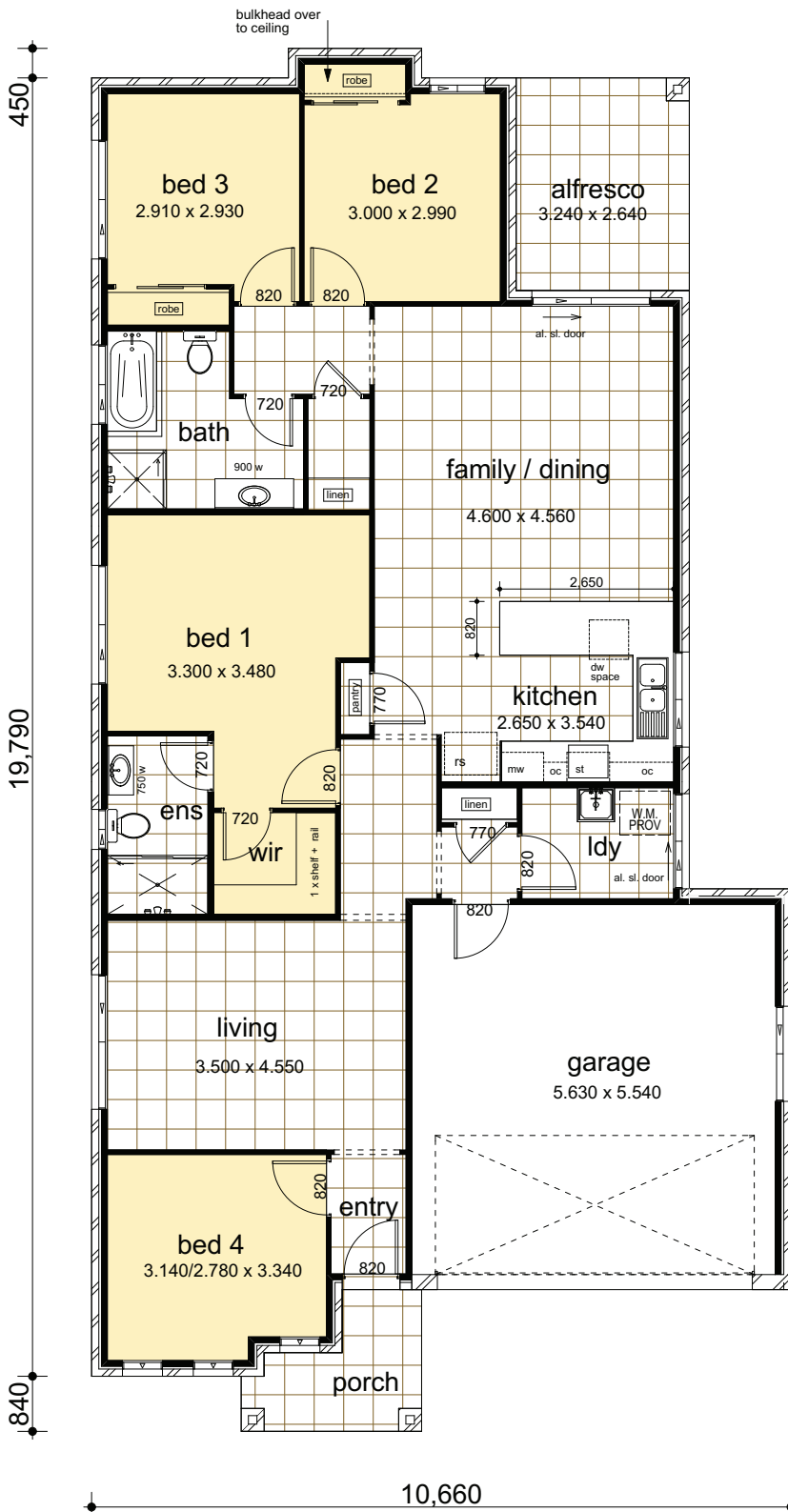
- "Colour on" concrete driveway (up to 50 Sqm)
- Ceramic floor tiles to common areas
- Carpet to remainder of house
- 1200mm high wall ceramic tiling to bed 1 ensuite & main bathroom x 1
- 5 sensor alarm package
- Vertical blinds to all windows (exc. wet area & garage)
- Flyscreens to all windows
- Standard Basix costs
- Facade in face brick as designed
- Construction site fencing
- 32MPA salinity resistant house slab

## DATA

1. Ground Floor	140.41
2. Garage	34.36
3. Alfresco	8.55
4. Porch	4.33
	<b>187.65m<sup>2</sup></b>

Suits 12.5m wide block.

Floor Plan drawn with Marsh Facade



Plans Copyright of Casaview Homes

CASAVIEW CONSTRUCTIONS PTY LTD

ABN 83 063 937 931

Builders Licence No 55277C

Tel: (02) 8783 8800 Fax: (02) 8783 7794

Note: Images used throughout are for illustration purposes and do not represent actual standard inclusions. All designs are subject to relevant authority approvals.