

THE PRIMAVERA 28 5 BED

Building With Excellence Since 1994

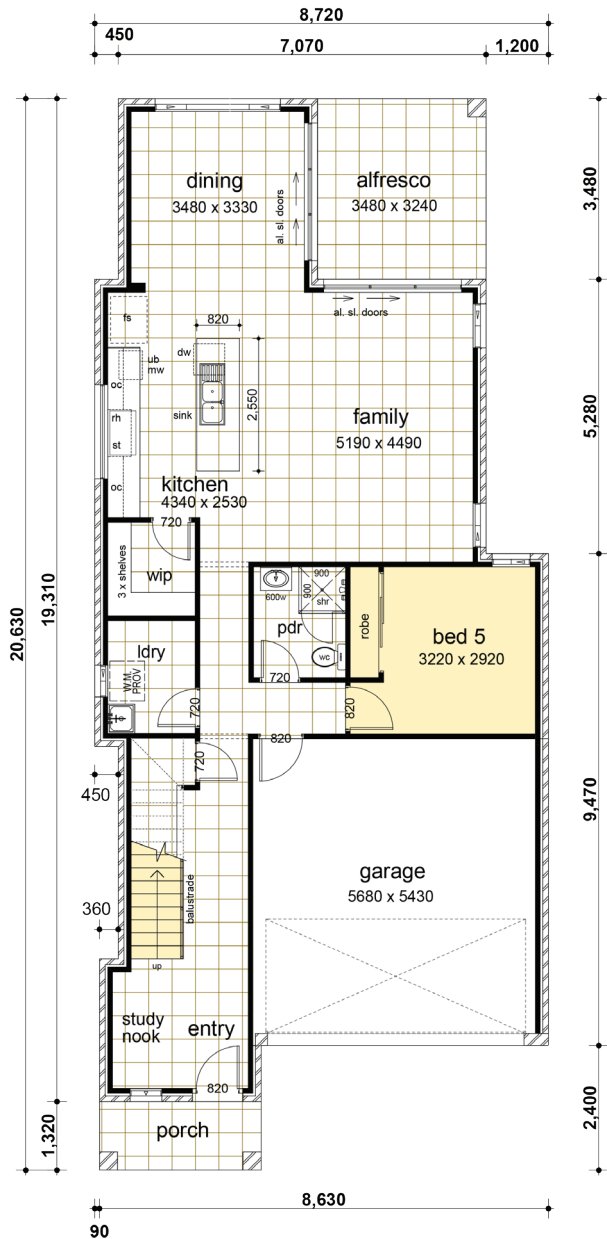


CASAVIEW
HOMES

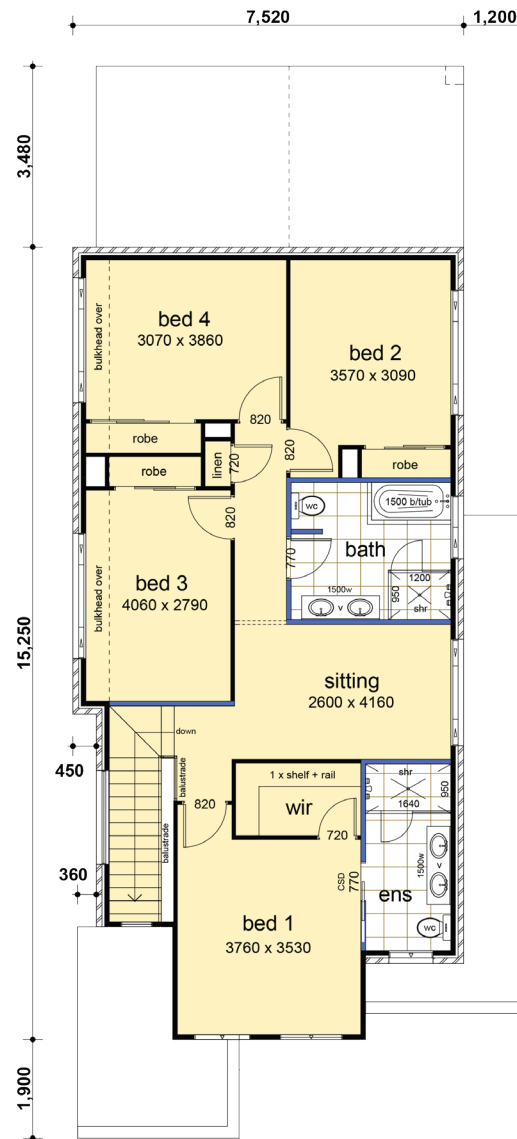


CASAVIEW HOMES - 100% AUSTRALIAN OWNED & OPERATED

THE PRIMAVERA 28 - 5 BED



Ground Floor



First Floor

PACKAGE INCLUDES:

- "Colour on" concrete driveway (up to 50 Sqm)
- Ceramic floor tiles to common areas
- Carpet to remainder of house
- 1200mm high wall ceramic tiling to bed 1 ensuite & main bathroom x 1
- 5 sensor alarm package
- Vertical blinds to all windows (exc. wet area & garage)
- Flyscreens to all windows
- Standard Basix costs
- Facade in face brick as designed
- Construction site fencing
- 32MPA salinity resistant house slab

DATA

1. Ground Floor	103.41
2. Garage	33.57
3. First Floor	105.91
4. Porch	4.11
5. Alfresco	11.28
	258.28m²

Suits 10m wide zero lot block.



Plans Copyright of Casaview Homes