

THE PATTERSON

Building With Excellence Since 1994



HAYMAN



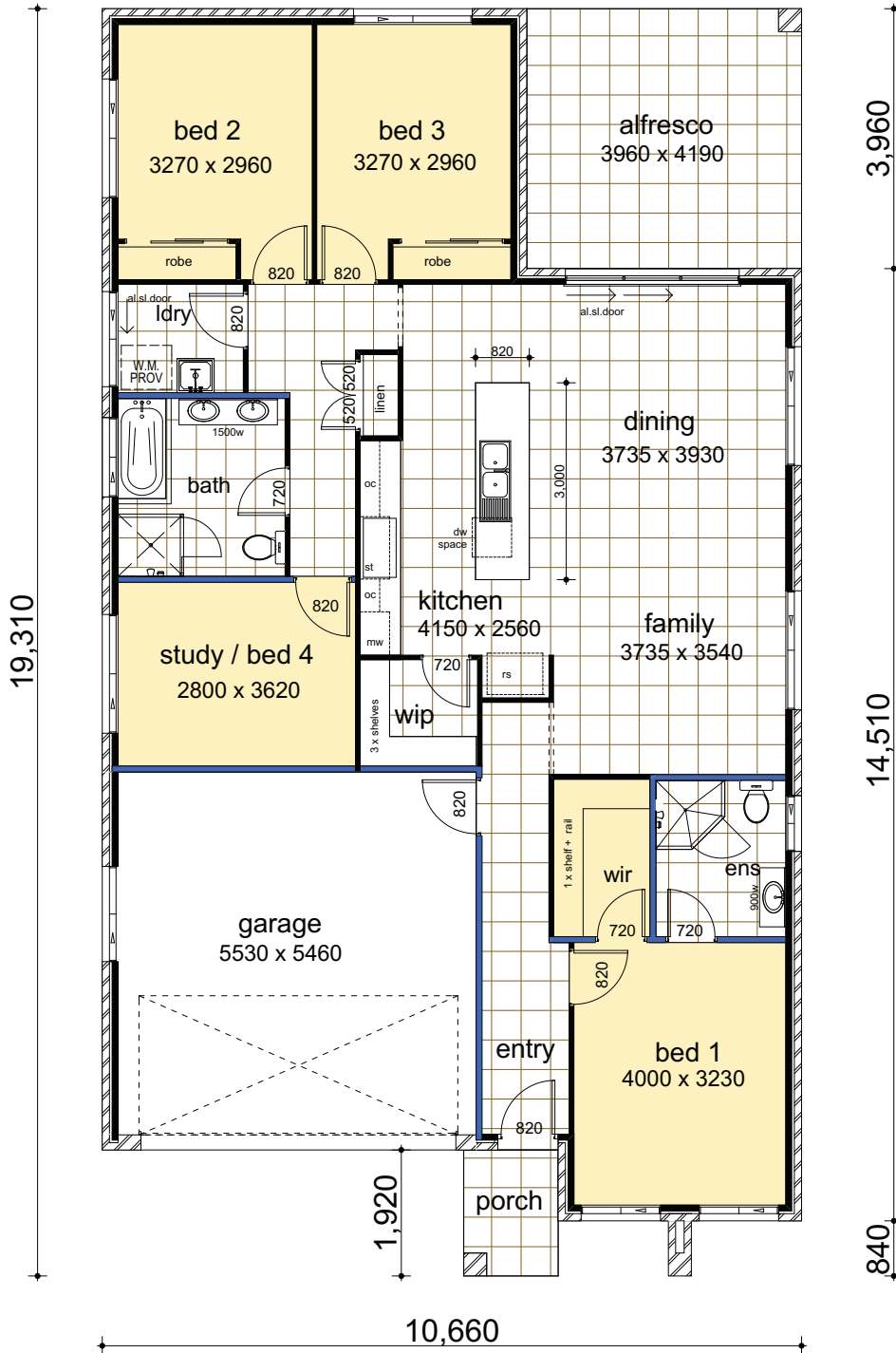
BRAMPTON



HAMILTON

CASAVIEW HOMES - 100% AUSTRALIAN OWNED & OPERATED

PATTERSON 21



PACKAGE INCLUDES:

- “Colour on” concrete driveway (up to 50 Sqm)
- Ceramic floor tiles to common areas
- Carpet to remainder of house
- 1200mm high wall ceramic tiling to bed 1 ensuite & main bathroom x 1
- 5 sensor alarm package
- Vertical blinds to all windows (exc. wet area & garage)
- Flyscreens to all windows
- Standard Basix costs
- Facade in face brick as designed
- Construction site fencing
- 32MPA salinity resistant house slab

DATA	
1. Living Area	139.96
2. Garage	32.83
3. Porch	2.76
4. Alfresco	16.59
5. Covered Area	1.71
	193.85m²

Suits 12.5m wide block.

Floor Plan drawn with Brampton Facade



Plans Copyright of Casaview Homes

WWW.CASAVIEW.COM.AU

PATTERSON 22

PACKAGE INCLUDES:

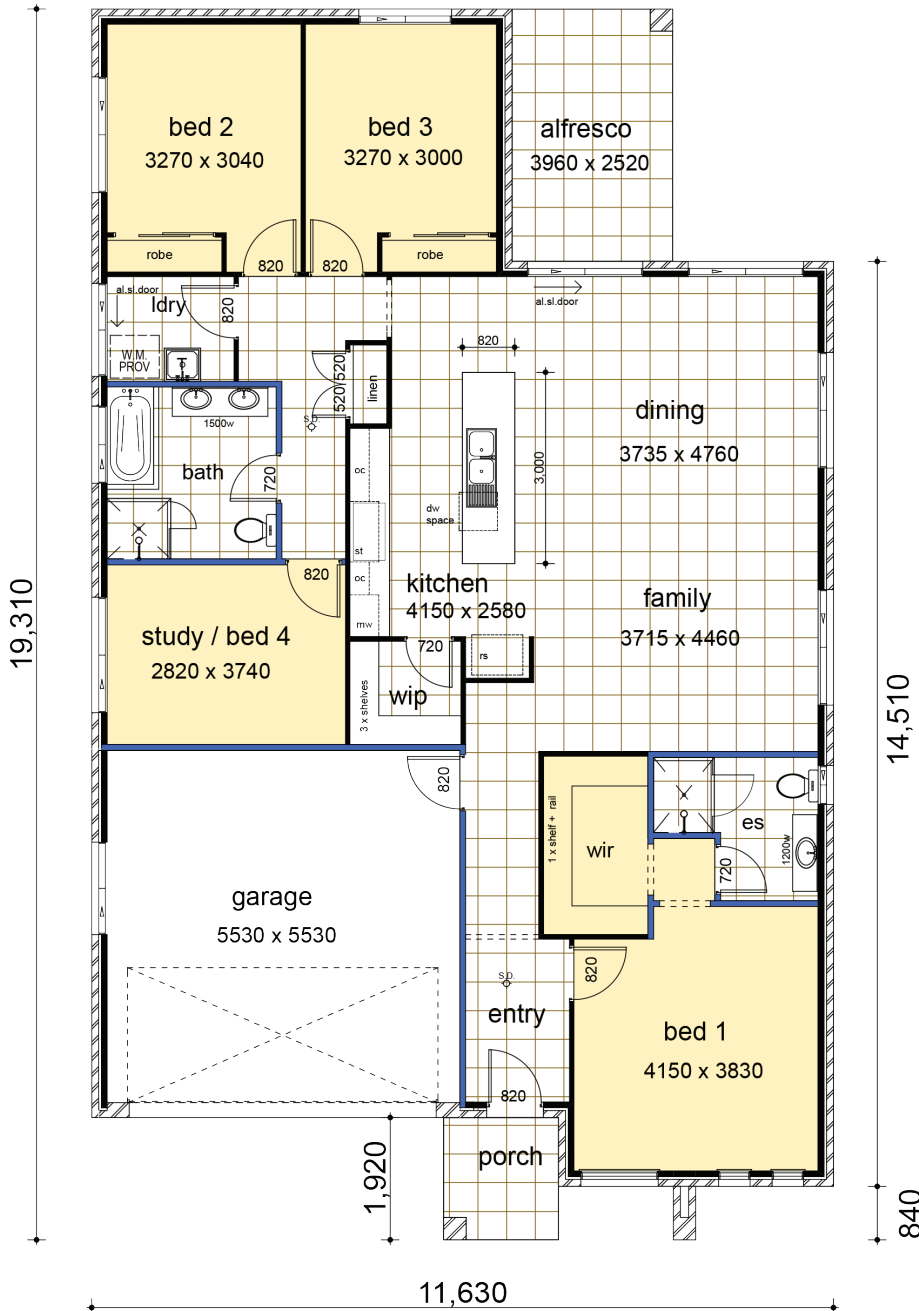
- "Colour on" concrete driveway (up to 50 Sqm)
- Ceramic floor tiles to common areas
- Carpet to remainder of house
- 1200mm high wall ceramic tiling to bed 1 ensuite & main bathroom x 1
- 5 sensor alarm package
- Vertical blinds to all windows (exc. wet area & garage)
- Flyscreens to all windows
- Standard Basix costs
- Facade in face brick as designed
- Construction site fencing
- 32MPA salinity resistant house slab

DATA

1. Living Area	153.71
2. Garage	33.24
3. Porch	3.46
4. Alfresco	9.98
5. Covered Area	1.81
	202.20m²

Suits 13.5m wide block.

Floor Plan drawn with Hayman Facade



Plans Copyright of Casaview Homes

WWW.CASAVIEW.COM.AU

