

THE OXLEY 26 SERIES

Building With Excellence Since 1994



CAPRICE

STATESMAN



ROYALE



CASAVIEW HOMES - 100% AUSTRALIAN OWNED & OPERATED

OXLEY 26 Mk1

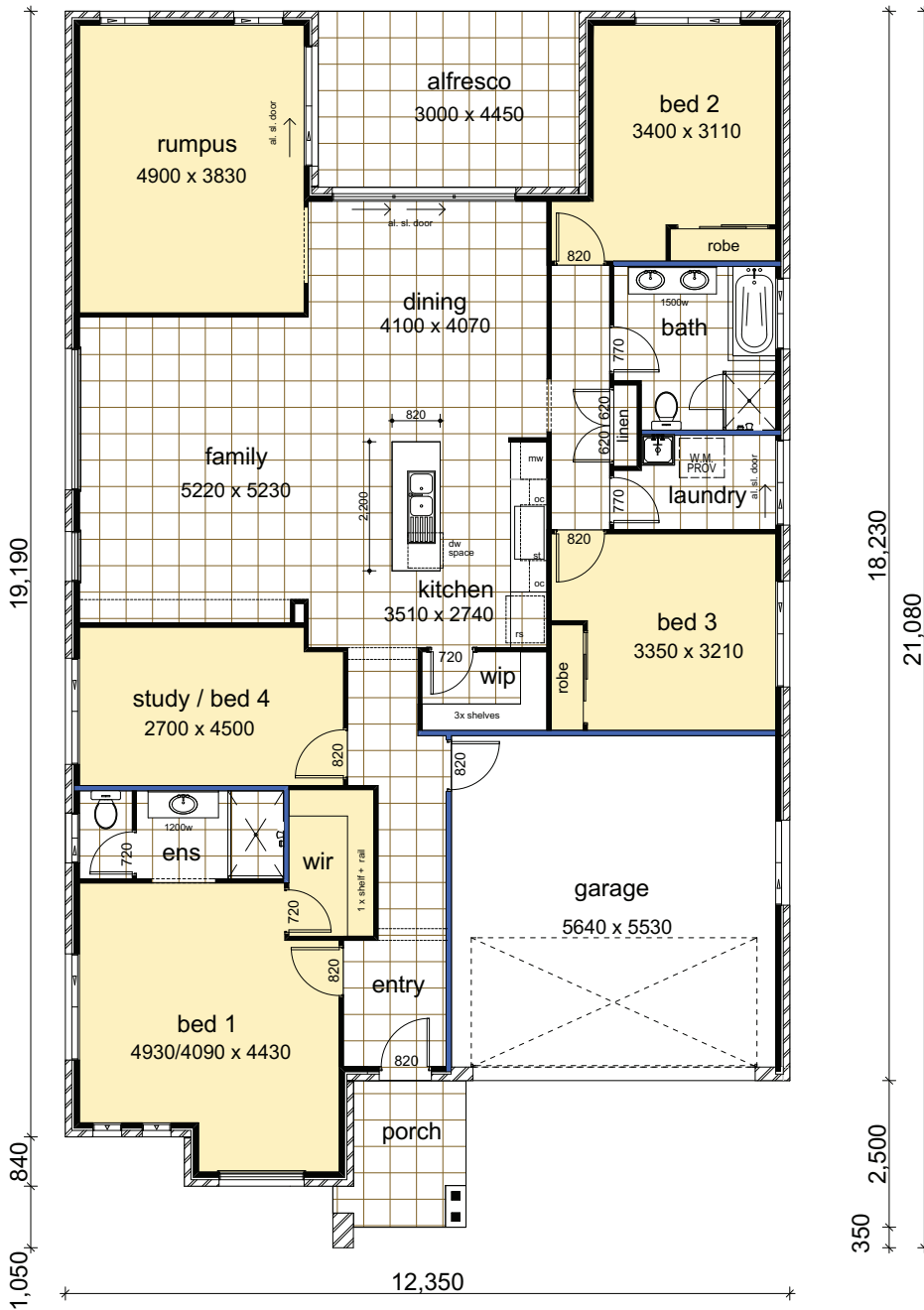
PACKAGE INCLUDES:

- "Colour on" concrete driveway (up to 50 Sqm)
- Ceramic floor tiles to common areas
- Carpet to remainder of house
- 1200mm high wall ceramic tiling to bed 1 ensuite & main bathroom x 1
- 5 sensor alarm package
- Vertical blinds to all windows (exc. wet area & garage)
- Flyscreens to all windows
- Standard Basix costs
- Facade in face brick as designed
- Construction site fencing
- 32MPA salinity resistant house slab

DATA	
1. Living Areas	185.00
2. Garage	33.93
3. Porch	5.04
4. Alfresco	13.35
	237.32m²

Suits 14.5m wide block.

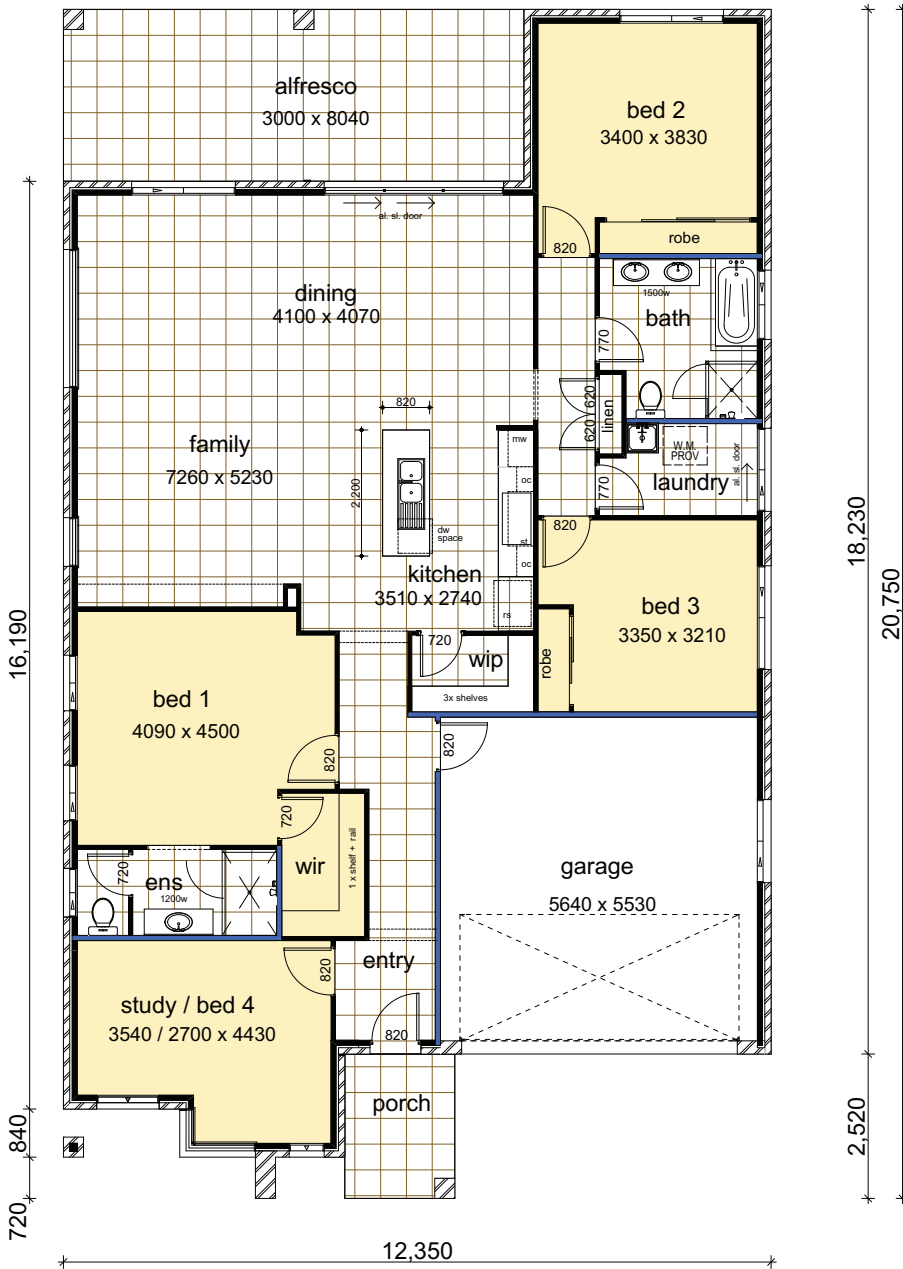
Floor Plan drawn with Statesman Facade



Plans Copyright of Casaview Homes

WWW.CASAVIEW.COM.AU

OXLEY 26 Mk2



PACKAGE INCLUDES:

- “Colour on” concrete driveway (up to 50 Sqm)
- Ceramic floor tiles to common areas
- Carpet to remainder of house
- 1200mm high wall ceramic tiling to bed 1 ensuite & main bathroom x 1
- 5 sensor alarm package
- Vertical blinds to all windows (exc. wet area & garage)
- Flyscreens to all windows
- Standard Basix costs
- Facade in face brick as designed
- Construction site fencing
- 32MPA salinity resistant house slab

DATA

1. Living Areas	174.23
2. Garage	33.93
3. Porch	4.84
4. Alfresco	24.12
5. Covered Area	1.12
	238.24m²

Suits 14.5m wide block.

Floor Plan drawn with Royale Facade



Plans Copyright of Casaview Homes

WWW.CASAVIEW.COM.AU

CASAVIEW CONSTRUCTIONS PTY LTD

ABN 83 063 937 931

Builders Licence No 55277C

Tel: (02) 8783 8800 Fax: (02) 8783 7794

Note: Images used throughout are for illustration purposes and do not represent actual standard inclusions. All designs are subject to relevant authority approvals.