

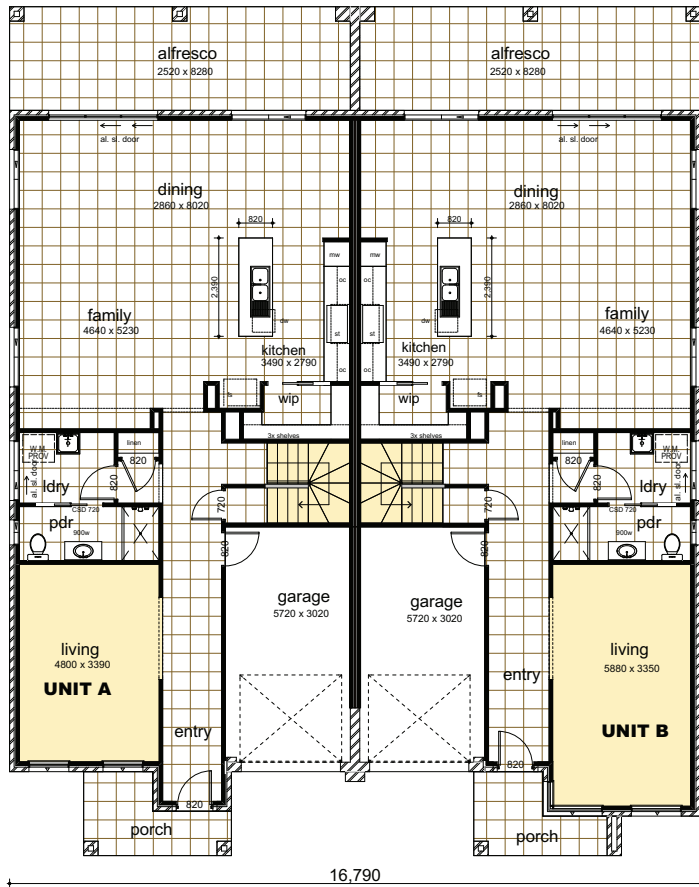
THE McEVOY DUPLEX

Building With Excellence Since 1994

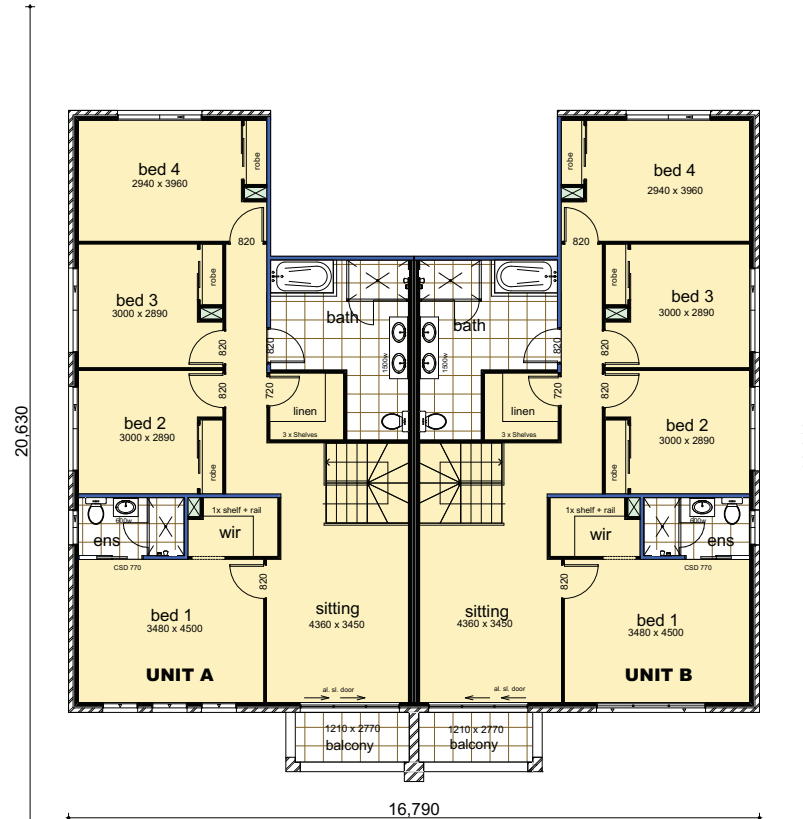


CASAVIEW HOMES - 100% AUSTRALIAN OWNED & OPERATED

THE McEVOY



Ground Floor



First Floor

McEVOY SERIES INCLUDES:

- “Colour on” concrete driveway (up to 70 Sqm)
- Ceramic floor tiles to common areas
- Carpet to remainder of house
- Standard Basix costs
- 1200mm high wall ceramic tiling to bed 1 ensuite & main bathroom x 1
- 5 sensor alarm package
- Vertical blinds to all windows (exc. wet area & garage)
- Flyscreens to all windows
- Facade in face brick as designed
- Construction site fencing
- 32MPA salinity resistant house slab

DATA	UNIT A	UNIT B
Ground Floor	117.97	120.27
Garage	18.83	18.83
Porch	5.49	5.26
Alfresco	21.16	21.16
First Floor	110.46	110.46
Balcony	4.54	4.53
TOTAL: 558.96m²		

TOTAL: 558.96m²

Suits 19m wide block.



Plans Copyright of Casaview Homes