

# THE FINGAL

Building With Excellence Since 1994



CASAVIEW  
HOMES



KEPPELL



HUNTER

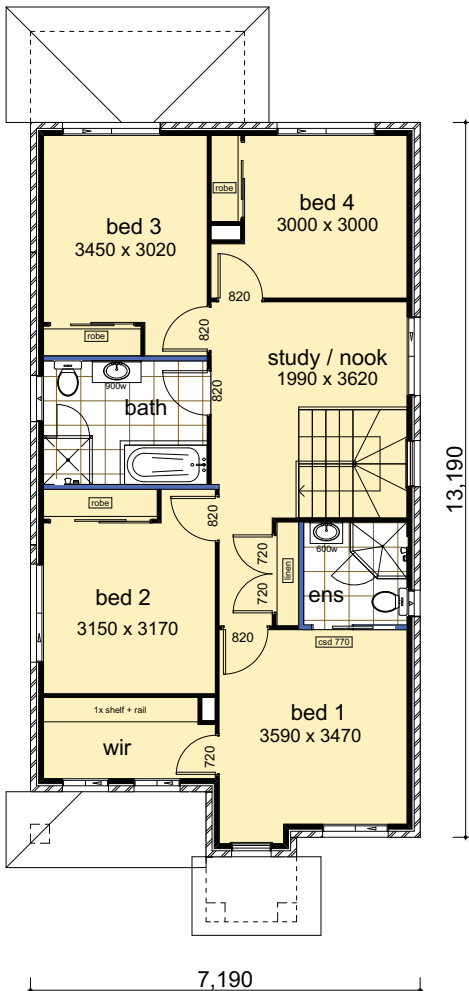
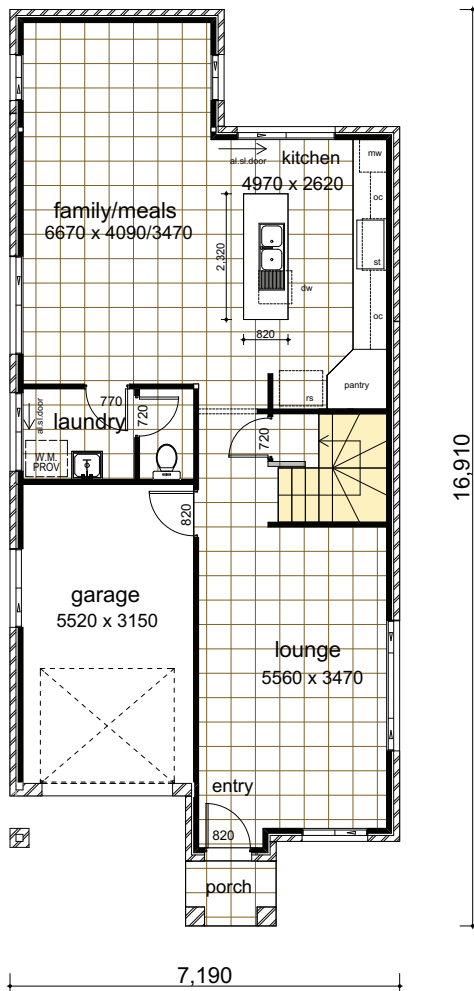


PHILLIP

CASAVIEW HOMES - 100% AUSTRALIAN OWNED & OPERATED

# FINGAL 22

## Ground Floor



## First Floor

### PACKAGE INCLUDES:

- “Colour on” concrete driveway (up to 30 Sqm)
- Ceramic floor tiles to common areas
- Carpet to remainder of house
- 1200mm high wall ceramic tiling to bed 1 ensuite & main bathroom x 1
- 5 sensor alarm package
- Vertical blinds to all windows (exc. wet area & garage)
- Flyscreens to all windows
- Standard Basix costs
- Facade in face brick as designed
- Construction site fencing
- 32MPA salinity resistant house slab

| DATA            |                            |
|-----------------|----------------------------|
| 1. Ground Floor | 81.76                      |
| 2. First Floor  | 92.72                      |
| 3. Garage       | 19.49                      |
| 4. Porch        | 2.00                       |
| 5. Covered Area | 3.08                       |
|                 | <b>199.05m<sup>2</sup></b> |

Suits 10m wide block

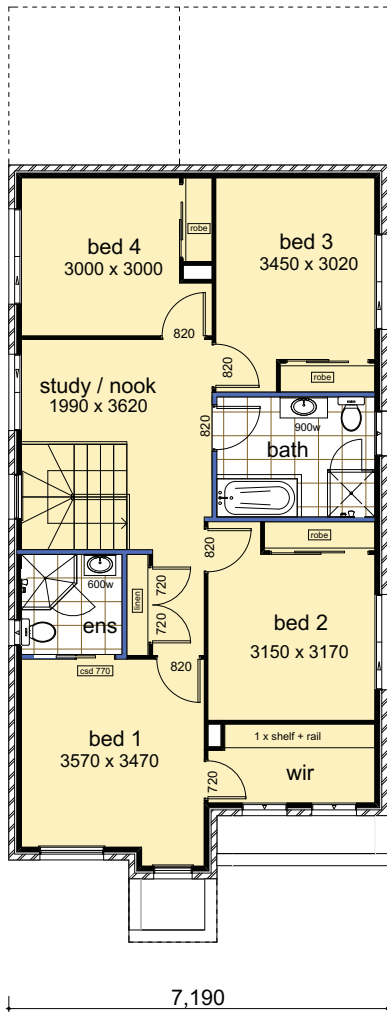
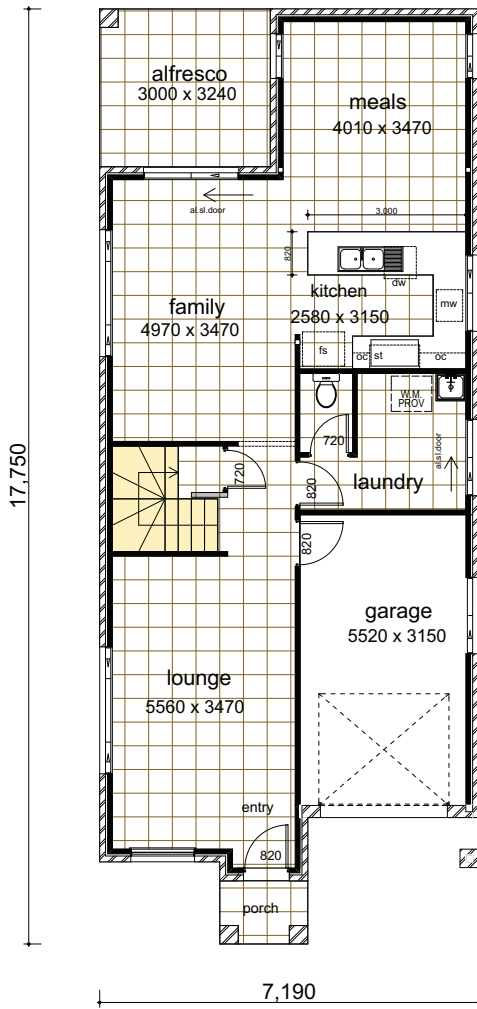
Floor Plan drawn with Hunter Facade



Plans Copyright of Casaview Homes

# FINGAL 23

## Ground Floor



## First Floor

### PACKAGE INCLUDES:

- “Colour on” concrete driveway (up to 30 Sqm)
- Ceramic floor tiles to common areas
- Carpet to remainder of house
- 1200mm high wall ceramic tiling to bed 1 ensuite & main bathroom x 1
- 5 sensor alarm package
- Vertical blinds to all windows (exc. wet area & garage)
- Flyscreens to all windows
- Standard Basix costs
- Facade in face brick as designed
- Construction site fencing
- 32MPA salinity resistant house slab

| DATA            |                            |
|-----------------|----------------------------|
| 1. Ground Floor | 85.07                      |
| 2. First Floor  | 92.72                      |
| 3. Garage       | 19.49                      |
| 4. Porch        | 2.00                       |
| 5. Covered Area | 3.08                       |
| 6. Alfresco     | 9.72                       |
|                 | <b>212.08m<sup>2</sup></b> |

Suits 10m wide block

Floor Plan drawn with Keppell Facade



Plans Copyright of Casaview Homes

# FINGAL 24

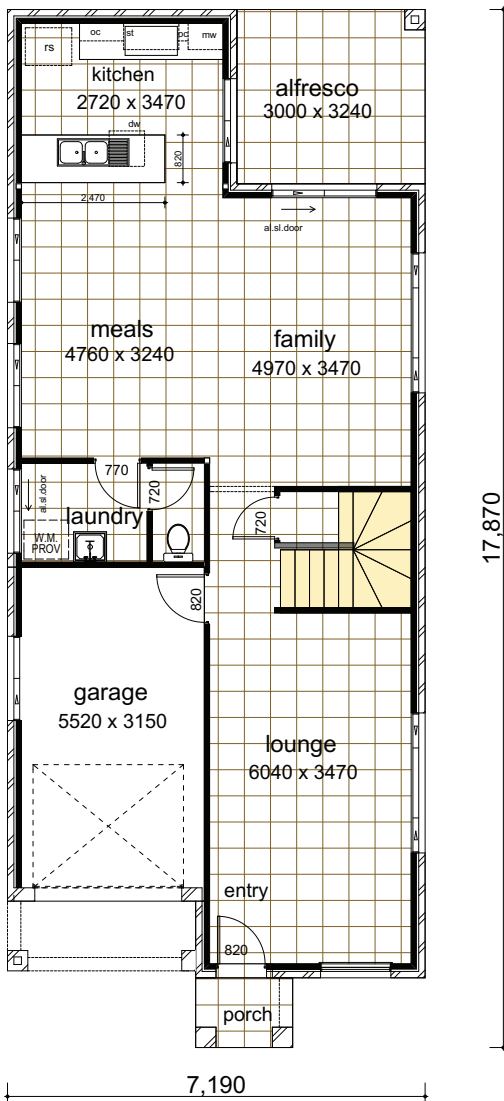
## PACKAGE INCLUDES:

- “Colour on” concrete driveway (up to 30 Sqm)
- Ceramic floor tiles to common areas
- Carpet to remainder of house
- 1200mm high wall ceramic tiling to bed 1 ensuite & main bathroom x 1
- 5 sensor alarm package
- Vertical blinds to all windows (exc. wet area & garage)
- Flyscreens to all windows
- Standard Basix costs
- Facade in face brick as designed
- Construction site fencing
- 32MPA salinity resistant house slab
- Colorbond custom orb roof

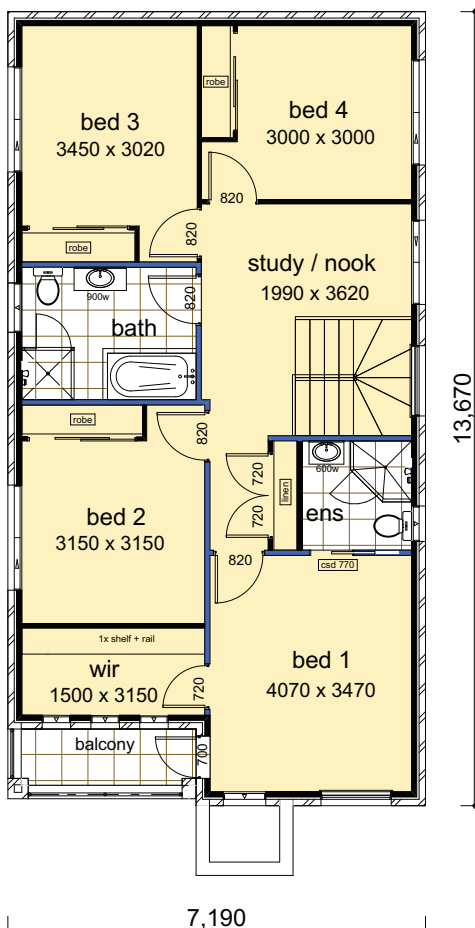
| DATA                       |       |
|----------------------------|-------|
| 1. Ground Floor            | 86.37 |
| 2. First Floor             | 94.01 |
| 3. Garage                  | 19.49 |
| 4. Porch                   | 2.00  |
| 5. Covered Area            | 3.89  |
| 6. Alfresco                | 9.72  |
| 7. Balcony                 | 3.89  |
| <b>219.37m<sup>2</sup></b> |       |

Suits 10m wide block

Floor Plan drawn with Phillip Facade



**Ground Floor**



**First Floor**



Plans Copyright of Casaview Homes

CASAVIEW CONSTRUCTIONS PTY LTD

ABN 83 063 937 931

Builders Licence No 55277C

Tel: (02) 8783 8800 Fax: (02) 8783 7794

Note: Images used throughout are for illustration purposes and do not represent actual standard inclusions. All designs are subject to relevant authority approvals.