

THE EDEN

Building With Excellence Since 1994



KIAMA



TUROSS



TURA

CASAVIEW HOMES - 100% AUSTRALIAN OWNED & OPERATED

EDEN 21 MK1

PACKAGE INCLUDES:

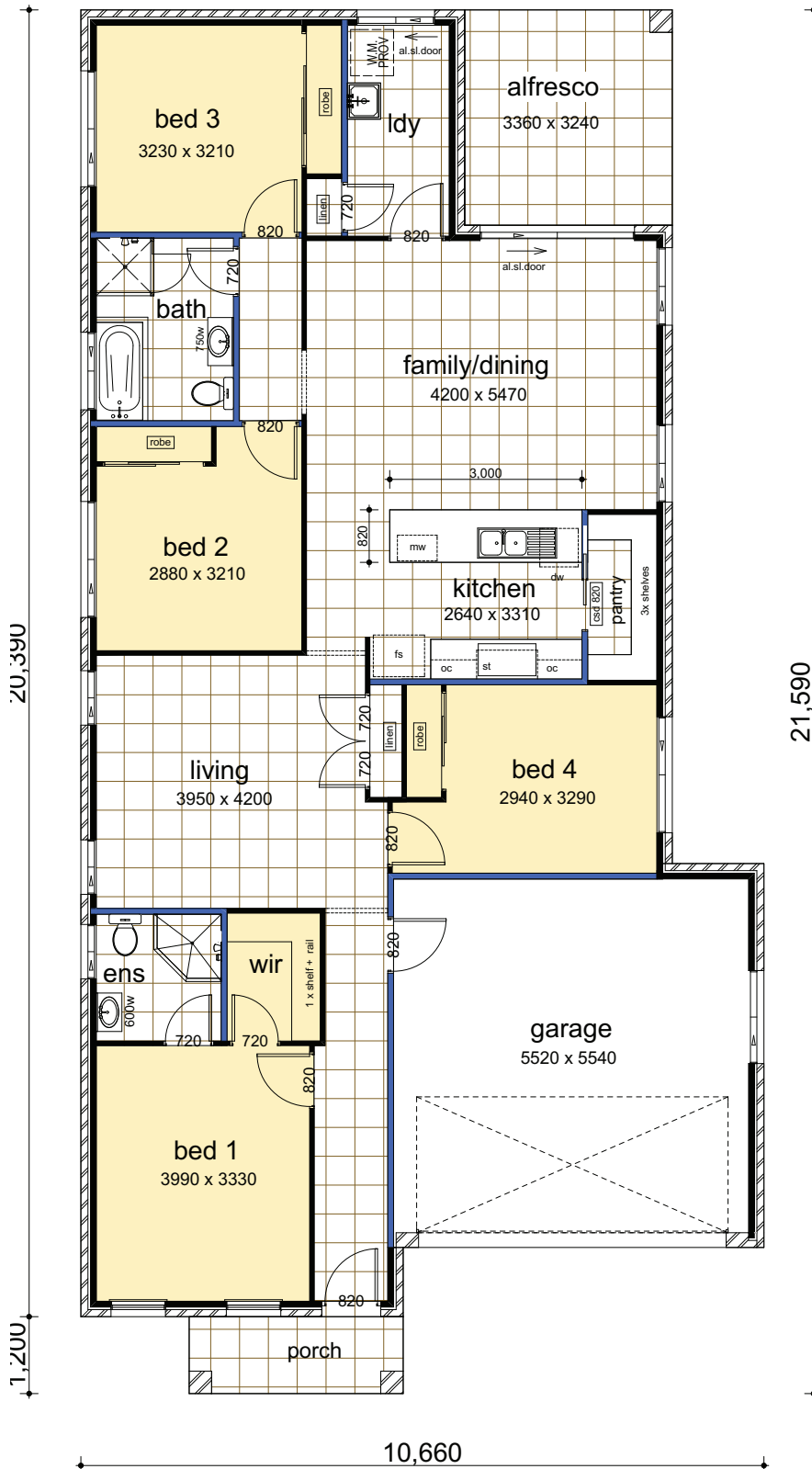
- "Colour on" concrete driveway (up to 50 Sqm)
- Ceramic floor tiles to common areas
- Carpet to remainder of house
- 1200mm high wall ceramic tiling to bed 1 ensuite & main bathroom x 1
- 5 sensor alarm package
- Vertical blinds to all windows (exc. wet area & garage)
- Flyscreens to all windows
- Standard Basix costs
- Facade in face brick as designed
- Construction site fencing
- 32MPA salinity resistant house slab

DATA

1. Living Areas	147.75
2. Garage	33.59
3. Alfresco	10.89
4. Porch	4.01
	196.24m²

Suits 12.5m wide block.

Floor Plan drawn with Tura Facade



Plans Copyright of Casaview Homes

WWW.CASAVIEW.COM.AU

EDEN 22

PACKAGE INCLUDES:

- "Colour on" concrete driveway (up to 50 Sqm)
- Ceramic floor tiles to common areas
- Carpet to remainder of house
- 1200mm high wall ceramic tiling to bed 1 ensuite & main bathroom x 1
- 5 sensor alarm package
- Vertical blinds to all windows (exc. wet area & garage)
- Flyscreens to all windows
- Standard Basix costs
- Facade in face brick as designed
- Construction site fencing
- 32MPA salinity resistant house slab

DATA	
1. Living Areas	150.53
2. Garage	33.62
3. Alfresco	14.89
4. Porch	3.67
5. Covered Area	0.90
	203.61m²

Suits 12.5m wide block.

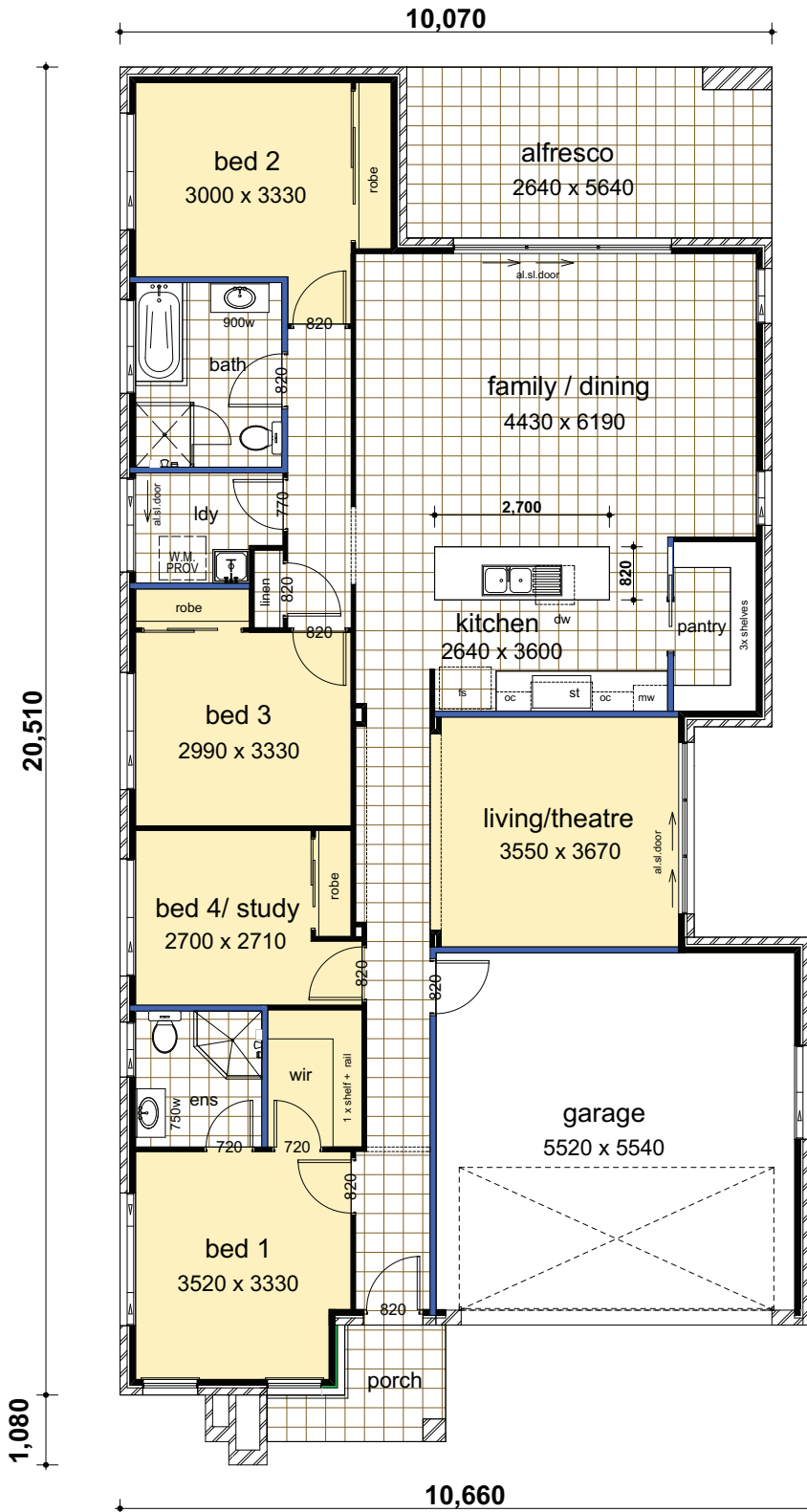
Floor Plan drawn with Kiama Facade



**ON DISPLAY NOW AT
MARSDEN PARK**

CASAVIEW CONSTRUCTIONS PTY LTD
 ABN 83 063 937 931
 Builders Licence No 55277C
 Tel: (02) 8783 8800 Fax: (02) 8783 7794

Note: Images used throughout are for illustration purposes and do not represent actual standard inclusions. All designs are subject to relevant authority approvals.



Plans Copyright of Casaview Homes